

Appendix A

Air Quality Analysis

Prepared by:

Hogle-Ireland, Inc.
1500 S. Iowa Avenue, 1st Floor
Riverside, California 92501

Artesia Boulevard Corridor Specific Plan Initial Study

Air Quality and GHG Analysis:
Existing Conditions Assumptions

Artesia Boulevard Corridor Specific Plan Initial Study

Air Quality and GHG Analysis:
CalEEMod Existing Conditions - Winter

2858 Artesia Blvd SP (Existing)
South Coast Air Basin, Winter

1.0 Project Characteristics

1.1 Land Usage

Land Uses	Size	Metric
General Office Building	29.83	1000sqft
Fast Food Restaurant w/o Drive Thru	3.31	1000sqft
Manufacturing	5.21	1000sqft
Hardware/Paint Store	7.54	1000sqft
General Light Industry	65.12	1000sqft
Single Family Housing	2	Dwelling Unit
Strip Mall	45.67	1000sqft
Recreational Swimming Pool	44.41	1000sqft
Automobile Care Center	14.8	1000sqft
Day-Care Center	5.44	1000sqft
Apartments Low Rise	6	Dwelling Unit
General Heavy Industry	6.81	1000sqft
High Turnover (Sit Down Restaurant)	1	1000sqft

1.2 Other Project Characteristics

Urbanization	Urban	Wind Speed (m/s)	2.2	Utility Company	Southern California Edison
Climate Zone	9	Precipitation Freq (Days)	31		

1.3 User Entered Comments

Project Characteristics -
Land Use - Existing Conditions (Adjust to Match Existing Inventory)
Construction Phase - Placeholder (No Construction Emissions to Be Modeled)

2.0 Emissions Summary

2.1 Overall Construction (Maximum Daily Emission)

Unmitigated Construction

Year	ROG	NOx	CO	SO2	Fugitive PM10	Exhaust PM10	PM10 Total	Fugitive PM2.5	Exhaust PM2.5	PM2.5 Total	Bio- CO2	NBio- CO2	Total CO2	CH4	N2O	CO2e
	lb/day										lb/day					

Mitigated Construction

Year	ROG	NOx	CO	SO2	Fugitive PM10	Exhaust PM10	PM10 Total	Fugitive PM2.5	Exhaust PM2.5	PM2.5 Total	Bio- CO2	NBio- CO2	Total CO2	CH4	N2O	CO2e
	lb/day										lb/day					

2.2 Overall Operational

Unmitigated Operational

Category	ROG	NOx	CO	SO2	Fugitive PM10	Exhaust PM10	PM10 Total	Fugitive PM2.5	Exhaust PM2.5	PM2.5 Total	Bio- CO2	NBio- CO2	Total CO2	CH4	N2O	CO2e
	lb/day										lb/day					
Area	7.02	0.05	3.35	0.01		0.00	0.43		0.00	0.43				0.22	0.00	207.45
Energy	0.10	0.91	0.75	0.01		0.00	0.07		0.00	0.07				0.02	0.02	1,104.90
Mobile	41.33	80.98	376.04	0.42	47.89	2.99	50.88	0.67	2.94	3.61				2.85		45,056.13
Total	48.45	91.94	380.14	0.44	47.89	2.99	51.38	0.67	2.94	4.01				3.09	0.02	46,368.48

Mitigated Operational

	ROG	NOx	CO	SO2	Fugitive PM10	Exhaust PM10	PM10 Total	Fugitive PM2.5	Exhaust PM2.5	PM2.5 Total	Bio- CO2	NBio- CO2	Total CO2	CH4	N2O	CO2e
Category	lb/day										lb/day					
Area	7.02	0.05	3.35	0.01		0.00	0.43		0.00	0.43				0.22	0.00	207.45
Energy	0.10	0.91	0.75	0.01		0.00	0.07		0.00	0.07				0.02	0.02	1,104.90
Mobile	41.33	90.88	376.04	0.42	47.89	2.99	50.88	0.67	2.84	3.51				2.85		45,056.13
Total	48.45	91.94	380.14	0.44	47.89	2.99	51.38	0.67	2.84	4.01				3.09	0.02	46,368.48

3.0 Construction Detail

3.1 Mitigation Measures Construction

Unmitigated Construction On-Site

	ROG	NOx	CO	SO2	Fugitive PM10	Exhaust PM10	PM10 Total	Fugitive PM2.5	Exhaust PM2.5	PM2.5 Total	Bio- CO2	NBio- CO2	Total CO2	CH4	N2O	CO2e
Category	lb/day										lb/day					

Unmitigated Construction Off-Site

	ROG	NOx	CO	SO2	Fugitive PM10	Exhaust PM10	PM10 Total	Fugitive PM2.5	Exhaust PM2.5	PM2.5 Total	Bio- CO2	NBio- CO2	Total CO2	CH4	N2O	CO2e
Category	lb/day										lb/day					

Mitigated Construction On-Site

	ROG	NOx	CO	SO2	Fugitive PM10	Exhaust PM10	PM10 Total	Fugitive PM2.5	Exhaust PM2.5	PM2.5 Total	Bio- CO2	NBio- CO2	Total CO2	CH4	N2O	CO2e
Category	lb/day										lb/day					

Mitigated Construction Off-Site

	ROG	NOx	CO	SO2	Fugitive PM10	Exhaust PM10	PM10 Total	Fugitive PM2.5	Exhaust PM2.5	PM2.5 Total	Bio- CO2	NBio- CO2	Total CO2	CH4	N2O	CO2e
Category	lb/day										lb/day					

4.0 Mobile Detail

4.1 Mitigation Measures Mobile

Category	ROG	NOx	CO	SO2	Fugitive PM10	Exhaust PM10	PM10 Total	Fugitive PM2.5	Exhaust PM2.5	PM2.5 Total	Bio- CO2	NBio- CO2	Total CO2	CH4	N2O	CO2e
	lb/day										lb/day					
Mitigated	41.33	90.98	376.04	0.42	47.89	2.99	50.88	0.67	2.84	3.51				2.85		45,056.13
Unmitigated	41.33	90.98	376.04	0.42	47.89	2.99	50.88	0.67	2.84	3.51				2.85		45,056.13
Total	NA	NA	NA	NA	NA	NA	NA	NA	NA	NA	NA	NA	NA	NA	NA	NA

4.2 Trip Summary Information

Land Use	Average Daily Trip Rate			Unmitigated Annual VMT	Mitigated Annual VMT
	Weekday	Saturday	Sunday		
Apartments Low Rise	39.54	42.96	36.42	112,420	112,420
Automobile Care Center	917.60	917.60	917.60	914,100	914,100
Day-Care Center	431.17	33.76	31.72	373,707	373,707
Fast Food Restaurant w/o Drive Thru	2,369.96	2,303.76	1,655.00	3,641,769	3,641,769
General Heavy Industry	10.22	10.22	10.22	29,823	29,823
General Light Industry	453.89	85.96	44.28	1,000,838	1,000,838
General Office Building	328.43	70.70	20.23	594,732	594,732
Hardware/Paint Store	336.73	70.70	7.76	638,732	638,732
High Turnover (Sit Down Restaurant)	127.15	158.37	131.84	153,480	153,480
Manufacturing	19.50	7.76	3.23	46,088	46,088
Recreational Swimming Pool	1,462.42	926.84	1187.08	2,433,637	2,433,637
Single Family Housing	19.14	20.16	17.54	54,125	54,125
Strip Mall	2,024.09	1,919.97	933.04	2,854,226	2,854,226
Total	8,590.24	7,120.27	5,514.81	12,847,678	12,847,678

4.3 Trip Type Information

Land Use	Miles			Trip %		
	H-W or C-W	H-S or C-C	H-O or C-NW	H-W or C-W	H-S or C-C	H-O or C-NW
Apartments Low Rise	10.80	7.30	7.50	40.20	19.20	40.60
Automobile Care Center	9.50	7.30	7.30	33.00	48.00	19.00
Day-Care Center	9.50	7.30	7.30	12.70	82.30	5.00
Fast Food Restaurant w/o Drive Thru	9.50	7.30	7.30	1.50	79.50	19.00
General Heavy Industry	9.50	7.30	7.30	59.00	28.00	13.00
General Light Industry	9.50	7.30	7.30	59.00	28.00	13.00
General Office Building	9.50	7.30	7.30	33.00	48.00	19.00
Hardware/Paint Store	9.50	7.30	7.30	13.60	67.40	19.00
High Turnover (Sit Down Restaurant)	9.50	7.30	7.30	8.50	72.50	19.00
Manufacturing	9.50	7.30	7.30	59.00	28.00	13.00
Recreational Swimming Pool	9.50	7.30	7.30	33.00	48.00	19.00
Single Family Housing	10.80	7.30	7.50	40.20	19.20	40.60
Strip Mall	9.50	7.30	7.30	16.60	64.40	19.00

5.0 Energy Detail

5.1 Mitigation Measures Energy

Category	ROG	NOx	CO	SO2	Fugitive PM10	Exhaust PM10	PM10 Total	Fugitive PM2.5	Exhaust PM2.5	PM2.5 Total	Bio- CO2	NBio- CO2	Total CO2	CH4	N2O	CO2e
	lb/day										lb/day					
Natural Gas Mitigated	0.10	0.91	0.75	0.01		0.00	0.07		0.00	0.07				0.02	0.02	1,104.90
Natural Gas Unmitigated	0.10	0.91	0.75	0.01		0.00	0.07		0.00	0.07				0.02	0.02	1,104.90
Total	NA	NA	NA	NA	NA	NA	NA	NA	NA	NA	NA	NA	NA	NA	NA	NA

5.2 Energy by Land Use - NaturalGas

Unmitigated

Land Use	NaturalGas Use kBtu	ROG	NOx	CO	SO2	lb/day			lb/day								
						Fugitive PM10	Exhaust PM10	PM10 Total	Fugitive PM2.5	Exhaust PM2.5	PM2.5 Total	Bio- CO2	NBio- CO2	Total CO2	CH4	N2O	CO2e
Apartments Low Rise	315.608	0.00	0.03	0.01	0.00	0.00	0.00	0.00	0.00	0.00	0.00	0.00	0.00	0.00	0.00	0.00	37.36
Automobile Care Center	762.501	0.01	0.07	0.06	0.00	0.00	0.01	0.01	0.00	0.01	0.01	0.00	0.00	0.00	0.00	0.00	90.25
Day-Care Center	162.246	0.00	0.02	0.01	0.00	0.00	0.00	0.00	0.00	0.00	0.00	0.00	0.00	0.00	0.00	0.00	19.20
Fast Food Restaurant w/ Drive Thru	2112.41	0.02	0.21	0.17	0.00	0.00	0.02	0.02	0.00	0.02	0.02	0.00	0.00	0.00	0.00	0.00	250.03
General Heavy Industry	351.154	0.00	0.03	0.03	0.00	0.00	0.00	0.00	0.00	0.00	0.00	0.00	0.00	0.00	0.00	0.00	41.56
General Light Industry	3356.12	0.04	0.33	0.28	0.00	0.00	0.03	0.03	0.00	0.03	0.03	0.01	0.01	0.01	0.01	0.01	397.24
General Office Building	893.265	0.01	0.09	0.07	0.00	0.00	0.01	0.01	0.00	0.01	0.01	0.00	0.00	0.00	0.00	0.00	105.73
Hardware/Paint Store	35.1411	0.00	0.00	0.00	0.00	0.00	0.00	0.00	0.00	0.00	0.00	0.00	0.00	0.00	0.00	0.00	4.16
High Turnover (Sit Down Restaurant)	638.384	0.01	0.06	0.05	0.00	0.00	0.00	0.00	0.00	0.00	0.00	0.00	0.00	0.00	0.00	0.00	75.56
Manufacturing	288.493	0.00	0.03	0.02	0.00	0.00	0.00	0.00	0.00	0.00	0.00	0.00	0.00	0.00	0.00	0.00	31.78
Recreational Swimming Pool	0	0.00	0.00	0.00	0.00	0.00	0.00	0.00	0.00	0.00	0.00	0.00	0.00	0.00	0.00	0.00	0.00
Single Family Housing	226.86	0.00	0.02	0.01	0.00	0.00	0.00	0.00	0.00	0.00	0.00	0.00	0.00	0.00	0.00	0.00	26.85
Strip Mall	212.691	0.00	0.02	0.02	0.00	0.00	0.00	0.00	0.00	0.00	0.00	0.00	0.00	0.00	0.00	0.00	25.17
Total		0.09	0.91	0.73	0.00		0.00	0.07		0.00	0.07				0.01	0.01	1,104.89

Mitigated

Land Use	NaturalGas Use kBtu	ROG	NOx	CO	SO2	lb/day			lb/day								
						Fugitive PM10	Exhaust PM10	PM10 Total	Fugitive PM2.5	Exhaust PM2.5	PM2.5 Total	Bio- CO2	NBio- CO2	Total CO2	CH4	N2O	CO2e
Apartments Low Rise	0.315608	0.00	0.03	0.01	0.00	0.00	0.00	0.00	0.00	0.00	0.00	0.00	0.00	0.00	0.00	0.00	37.36
Automobile Care Center	0.762501	0.01	0.07	0.06	0.00	0.00	0.01	0.01	0.00	0.01	0.01	0.00	0.00	0.00	0.00	0.00	90.25
Day-Care Center	0.162246	0.00	0.02	0.01	0.00	0.00	0.00	0.00	0.00	0.00	0.00	0.00	0.00	0.00	0.00	0.00	19.20
Fast Food Restaurant w/ Drive Thru	2.11241	0.02	0.21	0.17	0.00	0.00	0.02	0.02	0.00	0.02	0.02	0.00	0.00	0.00	0.00	0.00	250.03
General Heavy Industry	0.351154	0.00	0.03	0.03	0.00	0.00	0.00	0.00	0.00	0.00	0.00	0.00	0.00	0.00	0.00	0.00	41.56
General Light Industry	3.35612	0.04	0.33	0.28	0.00	0.00	0.03	0.03	0.00	0.03	0.03	0.01	0.01	0.01	0.01	0.01	397.24
General Office Building	0.893265	0.01	0.09	0.07	0.00	0.00	0.01	0.01	0.00	0.01	0.01	0.00	0.00	0.00	0.00	0.00	105.73
Hardware/Paint Store	0.0351411	0.00	0.00	0.00	0.00	0.00	0.00	0.00	0.00	0.00	0.00	0.00	0.00	0.00	0.00	0.00	4.16
High Turnover (Sit Down Restaurant)	0.638384	0.01	0.06	0.05	0.00	0.00	0.00	0.00	0.00	0.00	0.00	0.00	0.00	0.00	0.00	0.00	75.56
Manufacturing	0.288493	0.00	0.03	0.02	0.00	0.00	0.00	0.00	0.00	0.00	0.00	0.00	0.00	0.00	0.00	0.00	31.78
Recreational Swimming Pool	0	0.00	0.00	0.00	0.00	0.00	0.00	0.00	0.00	0.00	0.00	0.00	0.00	0.00	0.00	0.00	0.00
Single Family Housing	0.22686	0.00	0.02	0.01	0.00	0.00	0.00	0.00	0.00	0.00	0.00	0.00	0.00	0.00	0.00	0.00	26.85
Strip Mall	0.212691	0.00	0.02	0.02	0.00	0.00	0.00	0.00	0.00	0.00	0.00	0.00	0.00	0.00	0.00	0.00	25.17
Total		0.09	0.91	0.73	0.00		0.00	0.07		0.00	0.07				0.01	0.01	1,104.89

6.0 Area Detail

6.1 Mitigation Measures Area

Category	ROG	NOx	CO	SO2	Fugitive PM10	Exhaust PM10	PM10 Total	Fugitive PM2.5	Exhaust PM2.5	PM2.5 Total	Bio- CO2	NBio- CO2	Total CO2	CH4	N2O	CO2e
Mitigated	7.02	0.05	3.35	0.01	0.00	0.43	0.43	0.00	0.43	0.43				0.22	0.00	207.45
Unmitigated	7.02	0.05	3.35	0.01	0.00	0.43	0.43	0.00	0.43	0.43				0.22	0.00	207.45
Total	NA	NA	NA	NA	NA	NA	NA	NA	NA	NA	NA	NA	NA	NA	NA	NA

6.2 Area by SubCategory

Unmitigated

SubCategory	ROG	NOx	CO	SO2	Fugitive PM10	Exhaust PM10	PM10 Total	Fugitive PM2.5	Exhaust PM2.5	PM2.5 Total	Bio- CO2	NBio- CO2	Total CO2	CH4	N2O	CO2e
Architectural Coating	1.47				0.00	0.00	0.00	0.00	0.00	0.00						0.00
Consumer Products	4.67				0.00	0.00	0.00	0.00	0.00	0.00						0.00
Hearth	0.85	0.04	2.65	0.01	0.00	0.42	0.42	0.00	0.42	0.42				0.22	0.00	206.22

Landscaping	0.02	0.01	0.70	0.00		0.00	0.00		0.00	0.00				0.00		1.23
Total	7.01	0.05	3.35	0.01		0.00	0.42		0.00	0.42				0.22	0.00	207.45

Mitigated

SubCategory	ROG	NOx	CO	SO2	Fugitive PM10	Exhaust PM10	PM10 Total	Fugitive PM2.5	Exhaust PM2.5	PM2.5 Total	Bio- CO2	NBio- CO2	Total CO2	CH4	N2O	CO2e	
	lb/day										lb/day						
Architectural Coating	1.47					0.00	0.00		0.00	0.00							0.00
Consumer Products	4.67					0.00	0.00		0.00	0.00							0.00
Hearth	0.88	0.04	2.88	0.01	0.00	0.42	0.42	0.00	0.42	0.42			0.22	0.00			206.22
Landscaping	0.02	0.01	0.70	0.00	0.00	0.00	0.00	0.00	0.00	0.00				0.00			1.23
Total	7.01	0.05	3.35	0.01		0.00	0.42		0.00	0.42			0.22	0.00			207.45

7.0 Water Detail

7.1 Mitigation Measures Water

8.0 Waste Detail

8.1 Mitigation Measures Waste

9.0 Vegetation

Artesia Boulevard Corridor Specific Plan Initial Study

Air Quality and GHG Analysis:
CalEEMod Existing Conditions - Summer

2858 Artesia Blvd SP (Existing)
South Coast Air Basin, Summer

1.0 Project Characteristics

1.1 Land Usage

Land Uses	Size	Metric
General Office Building	29.83	1000sqft
Fast Food Restaurant w/o Drive Thru	3.31	1000sqft
Manufacturing	5.21	1000sqft
Hardware/Paint Store	7.54	1000sqft
General Light Industry	65.12	1000sqft
Single Family Housing	2	Dwelling Unit
Strip Mall	45.67	1000sqft
Recreational Swimming Pool	44.41	1000sqft
Automobile Care Center	14.8	1000sqft
Day-Care Center	5.44	1000sqft
Apartments Low Rise	6	Dwelling Unit
General Heavy Industry	6.81	1000sqft
High Turnover (Sit Down Restaurant)	1	1000sqft

1.2 Other Project Characteristics

Urbanization	Urban	Wind Speed (m/s)	2.2	Utility Company	Southern California Edison
Climate Zone	9	Precipitation Freq (Days)			

1.3 User Entered Comments

Project Characteristics - 31
 Land Use - Existing Conditions (Adjust to Match Existing Inventory)
 Construction Phase - Placeholder (No Construction Emissions to Be Modeled)

2.0 Emissions Summary

2.1 Overall Construction (Maximum Daily Emission)

Unmitigated Construction

Year	ROG	NOx	CO	SO2	Fugitive PM10	Exhaust PM10	PM10 Total	Fugitive PM2.5	Exhaust PM2.5	PM2.5 Total	Bio- CO2	NBio- CO2	Total CO2	CH4	N2O	CO2e
	lb/day										lb/day					

Mitigated Construction

Year	ROG	NOx	CO	SO2	Fugitive PM10	Exhaust PM10	PM10 Total	Fugitive PM2.5	Exhaust PM2.5	PM2.5 Total	Bio- CO2	NBio- CO2	Total CO2	CH4	N2O	CO2e
	lb/day										lb/day					

2.2 Overall Operational

Unmitigated Operational

Category	ROG	NOx	CO	SO2	Fugitive PM10	Exhaust PM10	PM10 Total	Fugitive PM2.5	Exhaust PM2.5	PM2.5 Total	Bio- CO2	NBio- CO2	Total CO2	CH4	N2O	CO2e
	lb/day										lb/day					
Area	7.02	0.05	3.35	0.01		0.00	0.43		0.00	0.43				0.22	0.00	207.45
Energy	0.10	0.91	0.75	0.01		0.00	0.07		0.00	0.07				0.02	0.02	1,104.90
Mobile	40.03	84.10	370.59	0.46	47.89	2.94	50.83	0.67	2.79	3.46				2.78		48,428.95
Total	47.15	85.06	374.69	0.48	47.89	2.94	51.33	0.67	2.79	3.96				3.02	0.02	49,741.30

Mitigated Operational

	ROG	NOx	CO	SO2	Fugitive PM10	Exhaust PM10	PM10 Total	Fugitive PM2.5	Exhaust PM2.5	PM2.5 Total	Bio- CO2	NBio- CO2	Total CO2	CH4	N2O	CO2e
Category	lb/day										lb/day					
Area	7.02	0.05	3.35	0.01		0.00	0.43		0.00	0.43				0.22	0.00	207.45
Energy	0.10	0.91	0.75	0.01		0.00	0.07		0.00	0.07				0.02	0.02	1,104.90
Mobile	40.03	84.10	370.59	0.46	47.89	2.94	50.83	0.67	2.79	3.46				2.78		48,428.95
Total	47.15	85.06	374.69	0.48	47.89	2.94	51.33	0.67	2.79	3.96				3.02	0.02	49,741.30

3.0 Construction Detail

3.1 Mitigation Measures Construction

Unmitigated Construction On-Site

	ROG	NOx	CO	SO2	Fugitive PM10	Exhaust PM10	PM10 Total	Fugitive PM2.5	Exhaust PM2.5	PM2.5 Total	Bio- CO2	NBio- CO2	Total CO2	CH4	N2O	CO2e
Category	lb/day										lb/day					

Unmitigated Construction Off-Site

	ROG	NOx	CO	SO2	Fugitive PM10	Exhaust PM10	PM10 Total	Fugitive PM2.5	Exhaust PM2.5	PM2.5 Total	Bio- CO2	NBio- CO2	Total CO2	CH4	N2O	CO2e
Category	lb/day										lb/day					

Mitigated Construction On-Site

	ROG	NOx	CO	SO2	Fugitive PM10	Exhaust PM10	PM10 Total	Fugitive PM2.5	Exhaust PM2.5	PM2.5 Total	Bio- CO2	NBio- CO2	Total CO2	CH4	N2O	CO2e
Category	lb/day										lb/day					

Mitigated Construction Off-Site

	ROG	NOx	CO	SO2	Fugitive PM10	Exhaust PM10	PM10 Total	Fugitive PM2.5	Exhaust PM2.5	PM2.5 Total	Bio- CO2	NBio- CO2	Total CO2	CH4	N2O	CO2e
Category	lb/day										lb/day					

4.0 Mobile Detail

4.1 Mitigation Measures Mobile

Category	ROG	NOx	CO	SO2	Fugitive PM10	Exhaust PM10	PM10 Total	Fugitive PM2.5	Exhaust PM2.5	PM2.5 Total	Bio-CO2	NBio-CO2	Total CO2	CH4	N2O	CO2e
	lb/day										lb/day					
Mitigated	40.03	84.10	370.59	0.46	47.89	2.94	50.83	0.67	2.79	3.46				2.78		48,428.95
Unmitigated	40.03	84.10	370.59	0.46	47.89	2.94	50.83	0.67	2.79	3.46				2.78		48,428.95
Total	NA	NA	NA	NA	NA	NA	NA	NA	NA	NA	NA	NA	NA	NA	NA	NA

4.2 Trip Summary Information

Land Use	Average Daily Trip Rate			Unmitigated Annual VMT	Mitigated Annual VMT
	Weekday	Saturday	Sunday		
Apartments Low Rise	39.54	42.96	36.42	112,420	112,420
Automobile Care Center	917.60	917.60	917.60	914,100	914,100
Day-Care Center	431.17	33.78	31.72	373,707	373,707
Fast Food Restaurant w/o Drive Thru	2,369.96	2,303.76	1,655.00	3,641,769	3,641,769
General Heavy Industry	10.22	10.22	10.22	29,823	29,823
General Light Industry	453.89	85.96	44.28	1,000,838	1,000,838
General Office Building	328.43	70.70	20.23	594,732	594,732
Hardware/Paint Store	336.73	70.70	7.76	638,732	638,732
High Turnover (Sit Down Restaurant)	127.15	158.37	131.84	153,480	153,480
Manufacturing	19.50	7.76	3.23	46,088	46,088
Recreational Swimming Pool	1,462.42	926.84	1187.08	2,433,637	2,433,637
Single Family Housing	19.14	20.16	17.54	54,125	54,125
Strip Mall	2,024.09	1,919.97	933.04	2,854,226	2,854,226
Total	8,590.24	7,120.27	5,514.81	12,847,678	12,847,678

4.3 Trip Type Information

Land Use	Miles			Trip %		
	H-W or C-W	H-S or C-C	H-O or C-NW	H-W or C-W	H-S or C-C	H-O or C-NW
Apartments Low Rise	10.80	7.30	7.50	40.20	19.20	40.60
Automobile Care Center	9.50	7.30	7.30	33.00	48.00	19.00
Day-Care Center	9.50	7.30	7.30	12.70	82.30	5.00
Fast Food Restaurant w/o Drive Thru	9.50	7.30	7.30	1.50	79.50	19.00
General Heavy Industry	9.50	7.30	7.30	59.00	28.00	13.00
General Light Industry	9.50	7.30	7.30	59.00	28.00	13.00
General Office Building	9.50	7.30	7.30	33.00	48.00	19.00
Hardware/Paint Store	9.50	7.30	7.30	13.60	67.40	19.00
High Turnover (Sit Down Restaurant)	9.50	7.30	7.30	8.50	72.50	19.00
Manufacturing	9.50	7.30	7.30	59.00	28.00	13.00
Recreational Swimming Pool	9.50	7.30	7.30	33.00	48.00	19.00
Single Family Housing	10.80	7.30	7.50	40.20	19.20	40.60
Strip Mall	9.50	7.30	7.30	16.60	64.40	19.00

5.0 Energy Detail

5.1 Mitigation Measures Energy

Category	ROG	NOx	CO	SO2	Fugitive PM10	Exhaust PM10	PM10 Total	Fugitive PM2.5	Exhaust PM2.5	PM2.5 Total	Bio-CO2	NBio-CO2	Total CO2	CH4	N2O	CO2e
	lb/day										lb/day					
Natural Gas Mitigated	0.10	0.91	0.75	0.01		0.00	0.07		0.00	0.07				0.02	0.02	1,104.90
Natural Gas Unmitigated	0.10	0.91	0.75	0.01		0.00	0.07		0.00	0.07				0.02	0.02	1,104.90
Total	NA	NA	NA	NA	NA	NA	NA	NA	NA	NA	NA	NA	NA	NA	NA	NA

5.2 Energy by Land Use - NaturalGas

Unmitigated

Land Use	NaturalGas Use kBtu	ROG	NOx	CO	SO2	lb/day			lb/day								
						Fugitive PM10	Exhaust PM10	PM10 Total	Fugitive PM2.5	Exhaust PM2.5	PM2.5 Total	Bio- CO2	NBio- CO2	Total CO2	CH4	N2O	CO2e
Apartments Low Rise	315.608	0.00	0.03	0.01	0.00	0.00	0.00	0.00	0.00	0.00	0.00	0.00	0.00	0.00	0.00	0.00	37.36
Automobile Care Center	762.501	0.01	0.07	0.06	0.00	0.00	0.01	0.01	0.00	0.01	0.01	0.00	0.00	0.00	0.00	0.00	90.25
Day-Care Center	162.246	0.00	0.02	0.01	0.00	0.00	0.00	0.00	0.00	0.00	0.00	0.00	0.00	0.00	0.00	0.00	19.20
Fast Food Restaurant w/ Drive Thru	2112.41	0.02	0.21	0.17	0.00	0.00	0.02	0.02	0.00	0.02	0.02	0.00	0.00	0.00	0.00	0.00	250.03
General Heavy Industry	351.154	0.00	0.03	0.03	0.00	0.00	0.00	0.00	0.00	0.00	0.00	0.00	0.00	0.00	0.00	0.00	41.56
General Light Industry	3356.12	0.04	0.33	0.28	0.00	0.00	0.03	0.03	0.00	0.03	0.03	0.01	0.01	0.01	0.01	0.01	397.24
General Office Building	893.265	0.01	0.09	0.07	0.00	0.00	0.01	0.01	0.00	0.01	0.01	0.00	0.00	0.00	0.00	0.00	105.73
Hardware/Paint Store	35.1411	0.00	0.00	0.00	0.00	0.00	0.00	0.00	0.00	0.00	0.00	0.00	0.00	0.00	0.00	0.00	4.16
High Turnover (Sit Down Restaurant)	638.384	0.01	0.06	0.05	0.00	0.00	0.00	0.00	0.00	0.00	0.00	0.00	0.00	0.00	0.00	0.00	75.56
Manufacturing	288.493	0.00	0.03	0.02	0.00	0.00	0.00	0.00	0.00	0.00	0.00	0.00	0.00	0.00	0.00	0.00	31.78
Recreational Swimming Pool	0	0.00	0.00	0.00	0.00	0.00	0.00	0.00	0.00	0.00	0.00	0.00	0.00	0.00	0.00	0.00	0.00
Single Family Housing	226.86	0.00	0.02	0.01	0.00	0.00	0.00	0.00	0.00	0.00	0.00	0.00	0.00	0.00	0.00	0.00	26.85
Strip Mall	212.691	0.00	0.02	0.02	0.00	0.00	0.00	0.00	0.00	0.00	0.00	0.00	0.00	0.00	0.00	0.00	25.17
Total		0.09	0.91	0.73	0.00		0.00	0.07		0.00	0.07				0.01	0.01	1,104.89

Mitigated

Land Use	NaturalGas Use kBtu	ROG	NOx	CO	SO2	lb/day			lb/day								
						Fugitive PM10	Exhaust PM10	PM10 Total	Fugitive PM2.5	Exhaust PM2.5	PM2.5 Total	Bio- CO2	NBio- CO2	Total CO2	CH4	N2O	CO2e
Apartments Low Rise	0.315608	0.00	0.03	0.01	0.00	0.00	0.00	0.00	0.00	0.00	0.00	0.00	0.00	0.00	0.00	0.00	37.36
Automobile Care Center	0.762501	0.01	0.07	0.06	0.00	0.00	0.01	0.01	0.00	0.01	0.01	0.00	0.00	0.00	0.00	0.00	90.25
Day-Care Center	0.162246	0.00	0.02	0.01	0.00	0.00	0.00	0.00	0.00	0.00	0.00	0.00	0.00	0.00	0.00	0.00	19.20
Fast Food Restaurant w/ Drive Thru	2.11241	0.02	0.21	0.17	0.00	0.00	0.02	0.02	0.00	0.02	0.02	0.00	0.00	0.00	0.00	0.00	250.03
General Heavy Industry	0.351154	0.00	0.03	0.03	0.00	0.00	0.00	0.00	0.00	0.00	0.00	0.00	0.00	0.00	0.00	0.00	41.56
General Light Industry	3.35612	0.04	0.33	0.28	0.00	0.00	0.03	0.03	0.00	0.03	0.03	0.01	0.01	0.01	0.01	0.01	397.24
General Office Building	0.893265	0.01	0.09	0.07	0.00	0.00	0.01	0.01	0.00	0.01	0.01	0.00	0.00	0.00	0.00	0.00	105.73
Hardware/Paint Store	0.0351411	0.00	0.00	0.00	0.00	0.00	0.00	0.00	0.00	0.00	0.00	0.00	0.00	0.00	0.00	0.00	4.16
High Turnover (Sit Down Restaurant)	0.638384	0.01	0.06	0.05	0.00	0.00	0.00	0.00	0.00	0.00	0.00	0.00	0.00	0.00	0.00	0.00	75.56
Manufacturing	0.288493	0.00	0.03	0.02	0.00	0.00	0.00	0.00	0.00	0.00	0.00	0.00	0.00	0.00	0.00	0.00	31.78
Recreational Swimming Pool	0	0.00	0.00	0.00	0.00	0.00	0.00	0.00	0.00	0.00	0.00	0.00	0.00	0.00	0.00	0.00	0.00
Single Family Housing	0.22686	0.00	0.02	0.01	0.00	0.00	0.00	0.00	0.00	0.00	0.00	0.00	0.00	0.00	0.00	0.00	26.85
Strip Mall	0.212691	0.00	0.02	0.02	0.00	0.00	0.00	0.00	0.00	0.00	0.00	0.00	0.00	0.00	0.00	0.00	25.17
Total		0.09	0.91	0.73	0.00		0.00	0.07		0.00	0.07				0.01	0.01	1,104.89

6.0 Area Detail

6.1 Mitigation Measures Area

Category	ROG	NOx	CO	SO2	Fugitive PM10	Exhaust PM10	PM10 Total	Fugitive PM2.5	Exhaust PM2.5	PM2.5 Total	Bio- CO2	NBio- CO2	Total CO2	CH4	N2O	CO2e
Mitigated	7.02	0.05	3.35	0.01	0.00	0.43	0.43	0.00	0.43	0.43				0.22	0.00	207.45
Unmitigated	7.02	0.05	3.35	0.01	0.00	0.43	0.43	0.00	0.43	0.43				0.22	0.00	207.45
Total	NA	NA	NA	NA	NA	NA	NA	NA	NA	NA	NA	NA	NA	NA	NA	NA

6.2 Area by SubCategory

Unmitigated

SubCategory	ROG	NOx	CO	SO2	Fugitive PM10	Exhaust PM10	PM10 Total	Fugitive PM2.5	Exhaust PM2.5	PM2.5 Total	Bio- CO2	NBio- CO2	Total CO2	CH4	N2O	CO2e
Architectural Coating	1.47				0.00	0.00	0.00	0.00	0.00	0.00						0.00
Consumer Products	4.67				0.00	0.00	0.00	0.00	0.00	0.00						0.00
Hearth	0.85	0.04	2.65	0.01	0.00	0.42	0.42	0.00	0.42	0.42				0.22	0.00	206.22

Landscaping	0.02	0.01	0.70	0.00		0.00	0.00		0.00	0.00				0.00		1.23
Total	7.01	0.05	3.35	0.01		0.00	0.42		0.00	0.42				0.22	0.00	207.45

Mitigated

	ROG	NOx	CO	SO2	Fugitive PM10	Exhaust PM10	PM10 Total	Fugitive PM2.5	Exhaust PM2.5	PM2.5 Total	Bio- CO2	NBio- CO2	Total CO2	CH4	N2O	CO2e	
SubCategory	lb/day										lb/day						
Architectural Coating	1.47					0.00	0.00		0.00	0.00							0.00
Consumer Products	4.67					0.00	0.00		0.00	0.00							0.00
Hearth	0.85	0.04	2.65	0.01		0.00	0.42		0.00	0.42				0.22	0.00		206.22
Landscaping	0.02	0.01	0.70	0.00		0.00	0.00		0.00	0.00				0.00			1.23
Total	7.01	0.05	3.35	0.01		0.00	0.42		0.00	0.42				0.22	0.00		207.45

7.0 Water Detail

7.1 Mitigation Measures Water

8.0 Waste Detail

8.1 Mitigation Measures Waste

9.0 Vegetation

Artesia Boulevard Corridor Specific Plan Initial Study

Air Quality and GHG Analysis:
CalEEMod Existing Conditions - Annual

2858 Artesia Blvd SP (Existing)
South Coast Air Basin, Annual

1.0 Project Characteristics

1.1 Land Usage

Land Uses	Size	Metric
General Office Building	29.83	1000sqft
Fast Food Restaurant w/o Drive Thru	3.91	1000sqft
Manufacturing	5.21	1000sqft
Hardware/Paint Store	7.54	1000sqft
General Light Industry	65.12	1000sqft
Single Family Housing	2	Dwelling Unit
Strip Mall	45.67	1000sqft
Recreational Swimming Pool	44.41	1000sqft
Automobile Care Center	14.8	1000sqft
Day-Care Center	5.44	1000sqft
Apartments Low Rise	6	Dwelling Unit
General Heavy Industry	6.81	1000sqft
High Turnover (Sit Down Restaurant)	1	1000sqft

1.2 Other Project Characteristics

Urbanization Urban Wind Speed (m/s) 2.2 Utility Company Southern California Edison
 Climate Zone 9 Precipitation Freq (Days) 31

1.3 User Entered Comments

Project Characteristics -
 Land Use - Existing Conditions (Adjust to Match Existing Inventory)
 Construction Phase - Placeholder (No Construction Emissions to Be Modeled)

2.0 Emissions Summary

2.1 Overall Construction

Unmitigated Construction

Year	ROG	NOx	CO	SO2	Fugitive PM10	Exhaust PM10	PM10 Total	Fugitive PM2.5	Exhaust PM2.5	PM2.5 Total	Bio- CO2	NBio- CO2	Total CO2	CH4	N2O	CO2e
	tons/yr										M/yr					

Mitigated Construction

Year	ROG	NOx	CO	SO2	Fugitive PM10	Exhaust PM10	PM10 Total	Fugitive PM2.5	Exhaust PM2.5	PM2.5 Total	Bio- CO2	NBio- CO2	Total CO2	CH4	N2O	CO2e
	tons/yr										M/yr					

2.2 Overall Operational

Unmitigated Operational

Category	ROG	NOx	CO	SO2	Fugitive PM10	Exhaust PM10	PM10 Total	Fugitive PM2.5	Exhaust PM2.5	PM2.5 Total	Bio- CO2	NBio- CO2	Total CO2	CH4	N2O	CO2e
	tons/yr										M/yr					
Area	1.15	0.00	0.18	0.00	0.00	0.01	0.00	0.00	0.01	0.01			5.95	0.00	0.00	6.04
Energy	0.02	0.17	0.14	0.00		0.00	0.01		0.00	0.01			944.51	0.04	0.02	950.39
Mobile	6.29	13.97	61.47	0.07	6.98	0.48	7.46	0.11	0.45	0.56			6,792.94	0.42	0.00	6,799.32
Waste						0.00	0.00		0.00	0.00			896.83	53.00	0.00	2,009.86
Water						0.00	0.00		0.00	0.00			1,326.96	12.11	0.32	1,883.66
Total	7.46	14.04	61.79	0.07	6.98	0.48	7.46	0.11	0.45	0.56			10,126.38	65.57	0.34	11,809.27

Mitigated Operational

	ROG	NOx	CO	SO2	Fugitive PM10	Exhaust PM10	PM10 Total	Fugitive PM2.5	Exhaust PM2.5	PM2.5 Total	Bio- CO2	NBio- CO2	Total CO2	CH4	N2O	CO2e
Category	tons/yr										MT/yr					
Area	1.15	0.00	0.18	0.00		0.00	0.01		0.00	0.01			5.95	0.00	0.00	6.04
Energy	0.02	0.17	0.14	0.00		0.00	0.01		0.00	0.01			944.51	0.04	0.02	950.39
Mobile	6.52	13.37	81.47	0.07	6.98	0.48	7.46	0.11	0.45	0.56			6,750.54	0.42	0.00	6,759.32
Waste													896.83	33.09	0.00	2,009.88
Water						0.00	0.00		0.00	0.00			1,528.55	12.11	0.32	1,883.66
Total	7.48	14.04	61.79	0.07	6.98	0.48	7.48	0.11	0.45	0.58			10,126.38	65.57	0.34	11,809.27

3.0 Construction Detail

3.1 Mitigation Measures Construction

Unmitigated Construction On-Site

	ROG	NOx	CO	SO2	Fugitive PM10	Exhaust PM10	PM10 Total	Fugitive PM2.5	Exhaust PM2.5	PM2.5 Total	Bio- CO2	NBio- CO2	Total CO2	CH4	N2O	CO2e
Category	tons/yr										MT/yr					

Unmitigated Construction Off-Site

	ROG	NOx	CO	SO2	Fugitive PM10	Exhaust PM10	PM10 Total	Fugitive PM2.5	Exhaust PM2.5	PM2.5 Total	Bio- CO2	NBio- CO2	Total CO2	CH4	N2O	CO2e
Category	tons/yr										MT/yr					

Mitigated Construction On-Site

	ROG	NOx	CO	SO2	Fugitive PM10	Exhaust PM10	PM10 Total	Fugitive PM2.5	Exhaust PM2.5	PM2.5 Total	Bio- CO2	NBio- CO2	Total CO2	CH4	N2O	CO2e
Category	tons/yr										MT/yr					

Mitigated Construction Off-Site

	ROG	NOx	CO	SO2	Fugitive PM10	Exhaust PM10	PM10 Total	Fugitive PM2.5	Exhaust PM2.5	PM2.5 Total	Bio- CO2	NBio- CO2	Total CO2	CH4	N2O	CO2e
Category	tons/yr										MT/yr					

4.0 Mobile Detail

4.1 Mitigation Measures Mobile

Category	ROG	NOx	CO	SO2	Fugitive PM10	Exhaust PM10	PM10 Total	Fugitive PM2.5	Exhaust PM2.5	PM2.5 Total	Bio-CO2	Nbio-CO2	Total CO2	CH4	N2O	CO2e
	tons/yr											MT/yr				
Mitigated	6.29	13.87	61.47	0.07	6.98	0.48	7.46	0.11	0.45	0.56			6,750.54	0.42	0.00	6,759.32
Unmitigated	6.29	13.87	61.47	0.07	6.98	0.48	7.46	0.11	0.45	0.56			6,750.54	0.42	0.00	6,759.32
Total	NA	NA	NA	NA	NA	NA	NA	NA	NA	NA	NA	NA	NA	NA	NA	NA

4.2 Trip Summary Information

Land Use	Average Daily Trip Rate			Unmitigated Annual VMT	Mitigated Annual VMT
	Weekday	Saturday	Sunday		
Apartments Low Rise	39.54	42.96	36.42	112,420	112,420
Automobile Care Center	917.60	917.60	917.60	914,100	914,100
Day-Care Center	431.17	33.78	31.72	373,707	373,707
Fast Food Restaurant w/o Drive Thru	2,369.96	2,303.76	1655.00	3,641,769	3,641,769
General Heavy Industry	10.22	10.22	10.22	29,623	29,623
General Light Industry	453.89	85.96	17.54	1,000,838	1,000,838
General Office Building	328.43	70.70	29.23	594,732	594,732
Hardware/Paint Store	127.15	158.37	131.94	638,732	638,732
High Turnover (Sit Down Restaurant)	1462.42	968.84	1187.05	153,480	153,480
Manufacturing	1.89	7.76	3.23	46,088	46,088
Recreational Swimming Pool	9.50	7.30	7.30	2,433,637	2,433,637
Single Family Housing	28.14	28.14	17.54	54,125	54,125
Strip Mall	2,924.09	1,919.97	933.04	2,854,226	2,854,226
Total	8,590.24	7,120.27	5,514.81	12,847,678	12,847,678

4.3 Trip Type Information

Land Use	Miles			Trip %		
	H-W or C-W	H-S or C-C	H-O or C-NW	H-W or C-W	H-S or C-C	H-O or C-NW
Apartments Low Rise	10.80	7.30	7.50	40.20	19.20	40.60
Automobile Care Center	9.50	7.30	7.30	33.00	48.00	19.00
Day-Care Center	9.50	7.30	7.30	12.70	82.30	5.00
Fast Food Restaurant w/o Drive Thru	9.50	7.30	7.30	1.50	73.50	19.00
General Heavy Industry	9.50	7.30	7.30	59.00	28.00	13.00
General Light Industry	9.50	7.30	7.30	59.00	28.00	13.00
General Office Building	9.50	7.30	7.30	33.00	48.00	19.00
Hardware/Paint Store	9.50	7.30	7.30	13.60	67.40	19.00
High Turnover (Sit Down Restaurant)	9.50	7.30	7.30	8.50	72.50	19.00
Manufacturing	9.50	7.30	7.30	59.00	28.00	13.00
Recreational Swimming Pool	9.50	7.30	7.30	33.00	48.00	19.00
Single Family Housing	10.80	7.30	7.50	40.20	19.20	40.60
Strip Mall	9.50	7.30	7.30	16.60	64.40	19.00

5.0 Energy Detail

5.1 Mitigation Measures Energy

Category	ROG	NOx	CO	SO2	Fugitive PM10	Exhaust PM10	PM10 Total	Fugitive PM2.5	Exhaust PM2.5	PM2.5 Total	Bio-CO2	Nbio-CO2	Total CO2	CH4	N2O	CO2e
	tons/yr											MT/yr				
Electricity Mitigated						0.00	0.00		0.00	0.00			762.68	0.03	0.01	767.46
Electricity Unmitigated						0.00	0.00		0.00	0.00			762.68	0.03	0.01	767.46
Natural Gas Mitigated	0.02	0.17	0.14	0.00		0.00	0.01		0.00	0.01			181.82	0.00	0.00	182.93
Natural Gas Unmitigated	0.02	0.17	0.14	0.00		0.00	0.01		0.00	0.01			181.82	0.00	0.00	182.93
Total	NA	NA	NA	NA	NA	NA	NA	NA	NA	NA	NA	NA	NA	NA	NA	NA

5.2 Energy by Land Use - NaturalGas

Unmitigated

Land Use	NaturalGas Use kBtu	ROG	NOx	CO	SO2	Fugitive PM10	Exhaust PM10	PM10 Total	Fugitive PM2.5	Exhaust PM2.5	PM2.5 Total	Bio-CO2	NBio-CO2	Total CO2	CH4	N2O	CO2e
Apartments Low Rise	115197	0.00	0.01	0.00	0.00		0.00	0.00	0.00	0.00	0.00			6.15	0.00	0.00	6.18
Automobile Care Center	278313	0.00	0.01	0.01	0.00		0.00	0.00	0.00	0.00	0.00			14.85	0.00	0.00	14.94
Day-Care Center	59219.8	0.00	0.00	0.00	0.00		0.00	0.00	0.00	0.00	0.00			3.16	0.00	0.00	3.18
Fast Food Restaurant w/o Drive	771030	0.00	0.04	0.03	0.00		0.00	0.00	0.00	0.00	0.00			41.15	0.00	0.00	41.40
General Heavy Industry	126171	0.01	0.01	0.01	0.00		0.00	0.00	0.00	0.00	0.00			6.84	0.00	0.00	6.88
General Light Industry	1224986+006	0.01	0.06	0.05	0.00		0.00	0.00	0.00	0.00	0.00			65.37	0.00	0.00	65.77
General Office Building	328042	0.00	0.02	0.01	0.00		0.00	0.00	0.00	0.00	0.00			17.40	0.00	0.00	17.50
Hardware/Paint Store	12826.5	0.00	0.00	0.00	0.00		0.00	0.00	0.00	0.00	0.00			0.68	0.00	0.00	0.69
High Turnover (Sit Down Restaurant)	233010	0.00	0.01	0.01	0.00		0.00	0.00	0.00	0.00	0.00			12.43	0.00	0.00	12.51
Manufacturing	98000.1	0.00	0.00	0.00	0.00		0.00	0.00	0.00	0.00	0.00			5.23	0.00	0.00	5.26
Recreational Swimming Pool	0	0.00	0.00	0.00	0.00		0.00	0.00	0.00	0.00	0.00			0.00	0.00	0.00	0.00
Single Family Housing	82804	0.00	0.00	0.00	0.00		0.00	0.00	0.00	0.00	0.00			4.42	0.00	0.00	4.45
Strip Mall	77632.2	0.00	0.00	0.00	0.00		0.00	0.00	0.00	0.00	0.00			4.14	0.00	0.00	4.17
Total		0.01	0.16	0.12	0.00		0.00	0.00	0.00	0.00	0.00			181.82	0.00	0.00	182.93

Mitigated

Land Use	NaturalGas Use kBtu	ROG	NOx	CO	SO2	Fugitive PM10	Exhaust PM10	PM10 Total	Fugitive PM2.5	Exhaust PM2.5	PM2.5 Total	Bio-CO2	NBio-CO2	Total CO2	CH4	N2O	CO2e
Apartments Low Rise	115197	0.00	0.01	0.00	0.00		0.00	0.00	0.00	0.00	0.00			6.15	0.00	0.00	6.18
Automobile Care Center	278313	0.00	0.01	0.01	0.00		0.00	0.00	0.00	0.00	0.00			14.85	0.00	0.00	14.94
Day-Care Center	59219.8	0.00	0.00	0.00	0.00		0.00	0.00	0.00	0.00	0.00			3.16	0.00	0.00	3.18
Fast Food Restaurant w/o Drive	771030	0.00	0.04	0.03	0.00		0.00	0.00	0.00	0.00	0.00			41.15	0.00	0.00	41.40
General Heavy Industry	126171	0.00	0.01	0.01	0.00		0.00	0.00	0.00	0.00	0.00			6.84	0.00	0.00	6.88
General Light Industry	1224986+006	0.01	0.06	0.05	0.00		0.00	0.00	0.00	0.00	0.00			65.37	0.00	0.00	65.77
General Office Building	328042	0.00	0.02	0.01	0.00		0.00	0.00	0.00	0.00	0.00			17.40	0.00	0.00	17.50
Hardware/Paint Store	12826.5	0.00	0.00	0.00	0.00		0.00	0.00	0.00	0.00	0.00			0.68	0.00	0.00	0.69
High Turnover (Sit Down Restaurant)	233010	0.00	0.01	0.01	0.00		0.00	0.00	0.00	0.00	0.00			12.43	0.00	0.00	12.51
Manufacturing	98000.1	0.00	0.00	0.00	0.00		0.00	0.00	0.00	0.00	0.00			5.23	0.00	0.00	5.26
Recreational Swimming Pool	0	0.00	0.00	0.00	0.00		0.00	0.00	0.00	0.00	0.00			0.00	0.00	0.00	0.00
Single Family Housing	82804	0.00	0.00	0.00	0.00		0.00	0.00	0.00	0.00	0.00			4.42	0.00	0.00	4.45
Strip Mall	77632.2	0.00	0.00	0.00	0.00		0.00	0.00	0.00	0.00	0.00			4.14	0.00	0.00	4.17
Total		0.01	0.16	0.12	0.00		0.00	0.00	0.00	0.00	0.00			181.82	0.00	0.00	182.93

5.3 Energy by Land Use - Electricity

Unmitigated

Land Use	Electricity Use kWh	ROG	NOx	CO	SO2	Total CO2	CH4	N2O	CO2e
Apartments Low Rise	21361.7					6.21	0.00	0.00	6.25
Automobile Care Center	178292					51.86	0.00	0.00	52.18
Day-Care Center	36434.8					10.60	0.00	0.00	10.66
Fast Food Restaurant w/o Drive	155225					45.15	0.00	0.00	45.43
General Heavy Industry	60138.7					23.88	0.00	0.00	24.03
General Light Industry	784744					228.26	0.01	0.00	229.69
General Office Building	433430					128.07	0.01	0.00	128.86
Hardware/Paint Store	114458					33.29	0.00	0.00	33.50
High Turnover (Sit Down Restaurant)	48910					13.64	0.00	0.00	13.73
Manufacturing	62780.5					18.26	0.00	0.00	18.38
Recreational Swimming Pool	0					0.00	0.00	0.00	0.00
Single Family Housing	13673.5					3.95	0.00	0.00	3.97
Strip Mall	66275.3					201.50	0.01	0.00	202.76
Total						762.67	0.03	0.00	767.44

Mitigated

Land Use	Electricity Use kWh	ROG	NOx	CO	SO2	Total CO2	CH4	N2O	CO2e
		tons/yr				MT/yr			
Apartments Low Rise	21361.7					6.21	0.00	0.00	6.25
Automobile Care Center	178292					51.86	0.00	0.00	52.18
Day-Care Center	36434.8					0.60	0.00	0.00	10.66
Fast Food Restaurant w/o Drive	126225					45.15	0.00	0.00	45.43
General Heavy Industry	82108.7					23.88	0.00	0.00	24.03
General Light Industry	784734					228.28	0.01	0.00	229.89
General Office Building	433430					126.07	0.01	0.00	126.86
Hardware/Paint Shop	114458					33.29	0.00	0.00	33.50
High Turnover (Sit Down Restaurant)	48910					13.64	0.00	0.00	13.73
Manufacturing	62780.5					18.26	0.00	0.00	18.38
Recreational Swimming Pool	0					0.00	0.00	0.00	0.00
Single Family Housing	13573.5					3.95	0.00	0.00	3.97
Strip Mall	862753					201.50	0.01	0.00	202.76
Total						762.67	0.63	0.00	767.44

6.0 Area Detail

6.1 Mitigation Measures Area

Category	ROG	NOx	CO	SO2	Fugitive PM10	Exhaust PM10	PM10 Total	Fugitive PM2.5	Exhaust PM2.5	PM2.5 Total	Bio-CO2	Nbio-CO2	Total CO2	CH4	N2O	CO2e
	tons/yr										MT/yr					
Mitigated	1.15	0.00	0.18	0.00	0.00	0.01	0.00	0.00	0.00	0.01			5.95	0.00	0.00	6.04
Unmitigated	1.15	0.00	0.18	0.00	0.00	0.01	0.00	0.00	0.00	0.01			5.95	0.00	0.00	6.04
Total	NA	NA	NA	NA	NA	NA	NA	NA	NA	NA	NA	NA	NA	NA	NA	NA

6.2 Area by SubCategory

Unmitigated

SubCategory	ROG	NOx	CO	SO2	Fugitive PM10	Exhaust PM10	PM10 Total	Fugitive PM2.5	Exhaust PM2.5	PM2.5 Total	Bio-CO2	Nbio-CO2	Total CO2	CH4	N2O	CO2e
	tons/yr										MT/yr					
Architectural Coating	0.27					0.00	0.00		0.00	0.00			0.00	0.00	0.00	0.00
Consumer Products	0.85					0.00	0.00		0.00	0.00			0.00	0.00	0.00	0.00
Health	0.03	0.00	0.05	0.00	0.00	0.01	0.01	0.00	0.00	0.01			5.75	0.00	0.00	5.84
Landscaping	0.00	0.00	0.13	0.00	0.00	0.00	0.00	0.00	0.00	0.00			0.20	0.00	0.00	0.20
Total	1.15	0.00	0.18	0.00	0.00	0.01	0.00	0.00	0.00	0.01			5.95	0.00	0.00	6.04

Mitigated

SubCategory	ROG	NOx	CO	SO2	Fugitive PM10	Exhaust PM10	PM10 Total	Fugitive PM2.5	Exhaust PM2.5	PM2.5 Total	Bio-CO2	Nbio-CO2	Total CO2	CH4	N2O	CO2e
	tons/yr										MT/yr					
Architectural Coating	0.27					0.00	0.00		0.00	0.00			0.00	0.00	0.00	0.00
Consumer Products	0.85					0.00	0.00		0.00	0.00			0.00	0.00	0.00	0.00
Health	0.03	0.00	0.05	0.00	0.00	0.01	0.01	0.00	0.00	0.01			5.75	0.00	0.00	5.84
Landscaping	0.00	0.00	0.13	0.00	0.00	0.00	0.00	0.00	0.00	0.00			0.20	0.00	0.00	0.20
Total	1.15	0.00	0.18	0.00	0.00	0.01	0.00	0.00	0.00	0.01			5.95	0.00	0.00	6.04

7.0 Water Detail

7.1 Mitigation Measures Water

Category	ROG	NOx	CO	SO2	Total CO2	CH4	N2O	CO2e
	tons/yr				MT/yr			
Mitigated					1,528.55	12.11	0.32	1,883.66
Unmitigated					1,528.55	12.11	0.32	1,883.66
Total	NA	NA	NA	NA	NA	NA	NA	NA

7.2 Water by Land Use

Unmitigated

Land Use	Indoor/Outdoor Use	ROG	NOx	CO	SO2	Total CO2	CH4	N2O	CO2e
	Mgal	tons/yr				M/yr			
Apartments Low Rise	0.390924 / 0.246452					2.28	0.01	0.00	2.64
Automobile Care Center	1.3924 / 0.253407					8.05	0.04	0.00	9.32
Day-Care Center	0.233319 / 0.253407					2.83	0.01	0.00	3.05
Fast Food	0.598507 / 1.0047 / 0.0641266					4.02	0.03	0.00	4.93
Restaurant w/o Drive	33.4844 / 0					127.20	1.03	0.03	157.31
General Heavy Industry	320.191 / 0					1,216.29	9.83	0.26	1,504.28
General Light Industry	5.3018 / 3.24949					30.64	0.16	0.00	35.47
General Office Building	0.558507 / 0.242411					3.23	0.02	0.00	3.74
Hardware/Paint Store	0.303534 / 0.081807					1.22	0.01	0.00	1.49
High Turnover (Sit Down Restaurant)	25.6173 / 0					97.31	0.79	0.02	120.35
Manufacturing	2.6255 / 1.60982					15.18	0.08	0.00	17.57
Recreational Swimming Pool	0.130308 / 0.081807					0.76	0.00	0.00	0.88
Single Family Housing	3.38289 / 2.07339					19.55	0.10	0.00	22.64
Strip Mall									
Total						1,528.56	12.11	0.31	1,883.67

Mitigated

Land Use	Indoor/Outdoor Use	ROG	NOx	CO	SO2	Total CO2	CH4	N2O	CO2e
	Mgal	tons/yr				M/yr			
Apartments Low Rise	0.390924 / 0.246452					2.28	0.01	0.00	2.64
Automobile Care Center	1.3924 / 0.253407					8.05	0.04	0.00	9.32
Day-Care Center	0.233319 / 0.253407					2.83	0.01	0.00	3.05
Fast Food	0.598507 / 1.0047 / 0.0641266					4.02	0.03	0.00	4.93
Restaurant w/o Drive	33.4844 / 0					127.20	1.03	0.03	157.31
General Heavy Industry	320.191 / 0					1,216.29	9.83	0.26	1,504.28
General Light Industry	5.3018 / 3.24949					30.64	0.16	0.00	35.47
General Office Building	0.558507 / 0.242411					3.23	0.02	0.00	3.74
Hardware/Paint Store	0.303534 / 0.081807					1.22	0.01	0.00	1.49
High Turnover (Sit Down Restaurant)	25.6173 / 0					97.31	0.79	0.02	120.35
Manufacturing	2.6255 / 1.60982					15.18	0.08	0.00	17.57
Recreational Swimming Pool	0.130308 / 0.081807					0.76	0.00	0.00	0.88
Single Family Housing	3.38289 / 2.07339					19.55	0.10	0.00	22.64
Strip Mall									
Total						1,528.56	12.11	0.31	1,883.67

8.0 Waste Detail

8.1 Mitigation Measures Waste

Category/Year

	ROG	NOx	CO	SO2	Total CO2	CH4	N2O	CO2e
	tons/yr				MT/yr			
Mitigated					896.83	53.00	0.00	2,009.86
Unmitigated					896.83	53.00	0.00	2,009.86
Total	NA	NA	NA	NA	NA	NA	NA	NA

8.2 Waste by Land Use

Unmitigated

Land Use	Waste Disposed	ROG	NOx	CO	SO2	Total CO2	CH4	N2O	CO2e
	tons	tons/yr				M/yr			
Apartments Low Rise	2.76					0.56	0.03	0.00	1.28
Automobile Care Center	56.54					11.48	0.68	0.00	25.72
Day-Care Center	2.07					1.44	0.08	0.00	3.22
Fast Food	38.13					7.74	0.46	0.00	17.35
Restaurant w/o Drive	41.92					8.51	0.50	0.00	19.07
General Heavy Industry	378.6					789.25	45.43	0.00	1,723.49
General Light Industry	27.74					5.63	0.33	0.00	12.62
General Office Building	83.61					16.97	1.00	0.00	38.04
Hardware/Paint Store	11.9					2.42	0.14	0.00	5.41
High Turnover (Sit Down Restaurant)	86.21					11.42	0.68	0.00	25.60
Manufacturing	253.14					51.39	3.04	0.00	115.16
Recreational Swimming Pool	2.46					0.50	0.03	0.00	1.12
Single Family Housing	47.25					9.73	0.58	0.00	21.81
Strip Mall									
Total						896.84	53.00	0.00	2,009.87

Mitigated

Land Use	Waste Disposed	ROG	NOx	CO	SO2	Total CO2	CH4	N2O	CO2e
	tons	tons/yr				M/yr			
Apartments Low Rise	2.76					0.56	0.03	0.00	1.26
Automobile Care Center	56.54					11.48	0.68	0.00	25.72
Day-Care Center	7.07					1.44	0.08	0.00	3.22
Fast Food Restaurant with Drive	38.13					7.74	0.46	0.00	17.35
General Heavy Industry	4.95					9.51	0.50	0.00	19.07
General Light Industry	3786.6					789.05	45.45	0.00	1,723.49
General Office Building	27.74					5.63	0.33	0.00	12.62
Hardware/Paint Store	53.61					16.97	1.00	0.00	38.04
High Turnover (Sit Down Restaurant)	11.9					2.42	0.14	0.00	5.41
Manufacturing	55.27					11.45	0.65	0.00	25.60
Recreational Swimming Pool	253.14					51.39	3.04	0.00	115.16
Single Family Housing	2.46					0.50	0.03	0.00	1.12
Strip Mall	47.85					9.73	0.58	0.00	21.81
Total						896.84	53.00	0.00	2,009.87

9.0 Vegetation

Artesia Boulevard Corridor Specific Plan Initial Study

Air Quality and GHG Analysis: Future Conditions Assumptions

Artesia Boulevard Corridor Specific Plan Initial Study

Air Quality and GHG Analysis:
CalEEMod Future Conditions - Winter

2858 Artesia Blvd SP (Future Conditions)
 South Coast Air Basin, Winter

1.0 Project Characteristics

1.1 Land Usage

Land Uses	Size	Metric
Apartments Low Rise	91.27	Dwelling Unit
Condo/Townhouse	4.94	Dwelling Unit
Regional Shopping Center	238.28	1000sqft

1.2 Other Project Characteristics

Urbanization	Urban	Wind Speed (m/s)	2.2	Utility Company	Southern California Edison
Climate Zone	9	Precipitation Freq (Days)	31		

1.3 User Entered Comments

- Project Characteristics -
- Land Use -
- Construction Phase - No Construction Emissions Analysis
- Mobile Land Use Mitigation -
- Energy Mitigation -
- Water Mitigation -
- Waste Mitigation -
- Area Mitigation -

2.0 Emissions Summary

2.1 Overall Construction (Maximum Daily Emission)

Unmitigated Construction

Year	ROG	NOx	CO	SO2	Fugitive PM10	Exhaust PM10	PM10 Total	Fugitive PM2.5	Exhaust PM2.5	PM2.5 Total	Bio- CO2	NBio- CO2	Total CO2	CH4	N2O	CO2e
	lb/day										lb/day					

Mitigated Construction

Year	ROG	NOx	CO	SO2	Fugitive PM10	Exhaust PM10	PM10 Total	Fugitive PM2.5	Exhaust PM2.5	PM2.5 Total	Bio- CO2	NBio- CO2	Total CO2	CH4	N2O	CO2e
	lb/day										lb/day					

2.2 Overall Operational

Unmitigated Operational

Category	ROG	NOx	CO	SO2	Fugitive PM10	Exhaust PM10	PM10 Total	Fugitive PM2.5	Exhaust PM2.5	PM2.5 Total	Bio- CO2	NBio- CO2	Total CO2	CH4	N2O	CO2e
	lb/day										lb/day					
Area	18.82	0.56	39.85	0.08		0.00	5.13		0.00	5.13				2.70	0.04	2,494.74
Energy	0.07	0.58	0.29	0.00		0.00	0.05		0.00	0.05				0.01	0.01	739.08
Mobile	26.66	62.26	198.63	0.67	75.61	3.33	78.94	1.08	3.24	4.32				1.62		53,747.90
Total	45.55	63.40	238.77	0.75	75.61	3.33	84.12	1.08	3.24	9.50				4.33	0.05	56,981.72

Mitigated Operational

Category	ROG	NOx	CO	SO2	Fugitive PM10	Exhaust PM10	PM10 Total	Fugitive PM2.5	Exhaust PM2.5	PM2.5 Total	Bio- CO2	NBio- CO2	Total CO2	CH4	N2O	CO2e
	lb/day										lb/day					
Area	18.82	0.56	39.85	0.08		0.00	5.13		0.00	5.13				2.70	0.04	2,494.74
Energy	0.07	0.58	0.29	0.00		0.00	0.05		0.00	0.05				0.01	0.01	739.08
Mobile	20.96	51.18	150.17	0.44	48.27	2.22	50.49	0.88	2.16	2.84				1.13		35,315.37

Total	39.85	52.32	190.31	0.52	48.27	2.22	55.67	0.69	2.16	8.02					3.84	0.05	38,549.19
-------	-------	-------	--------	------	-------	------	-------	------	------	------	--	--	--	--	------	------	-----------

3.0 Construction Detail

3.1 Mitigation Measures Construction

3.2 Architectural Coating - 2010

Unmitigated Construction On-Site

Category	ROG	NOx	CO	SO2	Fugitive PM10	Exhaust PM10	PM10 Total	Fugitive PM2.5	Exhaust PM2.5	PM2.5 Total	Bio- CO2	NBio- CO2	Total CO2	CH4	N2O	CO2e	
Category	lb/day										lb/day						
Archit. Coating	6,269.32					0.00	0.00		0.00	0.00							0.00
Off-Road	0.60	3.55	2.00	0.00		0.32	0.32		0.32	0.32				0.05			282.32
Total	6,269.92	3.55	2.00	0.00		0.32	0.32		0.32	0.32				0.05			282.32

Unmitigated Construction Off-Site

Category	ROG	NOx	CO	SO2	Fugitive PM10	Exhaust PM10	PM10 Total	Fugitive PM2.5	Exhaust PM2.5	PM2.5 Total	Bio- CO2	NBio- CO2	Total CO2	CH4	N2O	CO2e	
Category	lb/day										lb/day						
Hauling	0.00	0.00	0.00	0.00	0.00	0.00	0.00	0.00	0.00	0.00				0.00			0.00
Vendor	0.00	0.00	0.00	0.00	0.00	0.00	0.00	0.00	0.00	0.00				0.00			0.00
Worker	0.22	0.24	2.27	0.00	0.38	0.01	0.39	0.01	0.01	0.02				0.02			299.40
Total	0.22	0.24	2.27	0.00	0.38	0.01	0.39	0.01	0.01	0.02				0.02			299.40

Mitigated Construction On-Site

Category	ROG	NOx	CO	SO2	Fugitive PM10	Exhaust PM10	PM10 Total	Fugitive PM2.5	Exhaust PM2.5	PM2.5 Total	Bio- CO2	NBio- CO2	Total CO2	CH4	N2O	CO2e	
Category	lb/day										lb/day						
Archit. Coating	6,269.32					0.00	0.00		0.00	0.00							0.00
Off-Road	0.60	3.55	2.00	0.00		0.32	0.32		0.32	0.32				0.05			282.32
Total	6,269.92	3.55	2.00	0.00		0.32	0.32		0.32	0.32				0.05			282.32

Mitigated Construction Off-Site

Category	ROG	NOx	CO	SO2	Fugitive PM10	Exhaust PM10	PM10 Total	Fugitive PM2.5	Exhaust PM2.5	PM2.5 Total	Bio- CO2	NBio- CO2	Total CO2	CH4	N2O	CO2e	
Category	lb/day										lb/day						
Hauling	0.00	0.00	0.00	0.00	0.00	0.00	0.00	0.00	0.00	0.00				0.00			0.00
Vendor	0.00	0.00	0.00	0.00	0.00	0.00	0.00	0.00	0.00	0.00				0.00			0.00
Worker	0.22	0.24	2.27	0.00	0.01	0.01	0.03	0.01	0.01	0.02				0.02			299.40
Total	0.22	0.24	2.27	0.00	0.01	0.01	0.03	0.01	0.01	0.02				0.02			299.40

4.0 Mobile Detail

4.1 Mitigation Measures Mobile

- Increase Density
- Increase Diversity
- Increase Transit Accessibility
- Improve Pedestrian Network

Category	ROG	NOx	CO	SO2	Fugitive PM10	Exhaust PM10	PM10 Total	Fugitive PM2.5	Exhaust PM2.5	PM2.5 Total	Bio- CO2	NBio- CO2	Total CO2	CH4	N2O	CO2e	
Category	lb/day										lb/day						
Mitigated	20.96	51.18	150.17	0.44	48.27	2.22	50.49	0.69	2.16	2.84				1.13			35,315.37

Unmitigated	26.66	62.26	198.63	0.67	75.61	3.33	78.94	1.08	3.24	4.32					1.62		53,747.90
Total	NA	NA	NA	NA	NA	NA	NA	NA	NA	NA	NA	NA	NA	NA	NA	NA	NA

4.2 Trip Summary Information

Land Use	Average Daily Trip Rate			Unmitigated Annual VMT	Mitigated Annual VMT
	Weekday	Saturday	Sunday		
Apartments Low Rise	601.47	653.49	554.01	1,710,097	1,091,857
Condo/Townhouse	32.55	35.37	29.99	92,559	59,097
Regional Shopping Center	10,231.74	11,906.85	6014.19	17,302,552	11,047,275
Total	10,865.77	12,595.72	6,598.18	19,105,208	12,198,229

4.3 Trip Type Information

Land Use	Miles			Trip %		
	H-W or C-W	H-S or C-C	H-O or C-NW	H-W or C-W	H-S or C-C	H-O or C-NW
Apartments Low Rise	10.80	7.30	7.50	40.20	19.20	40.60
Condo/Townhouse	10.80	7.30	7.50	40.20	19.20	40.60
Regional Shopping Center	9.50	7.30	7.30	16.30	64.70	19.00

5.0 Energy Detail

5.1 Mitigation Measures Energy

Category	ROG	NOx	CO	SO2	Fugitive PM10	Exhaust PM10	PM10 Total	Fugitive PM2.5	Exhaust PM2.5	PM2.5 Total	Bio- CO2	NBio- CO2	Total CO2	CH4	N2O	CO2e
NaturalGas Mitigated	0.07	0.58	0.29	0.00		0.00	0.05		0.00	0.05				0.01	0.01	739.08
NaturalGas Unmitigated	0.07	0.58	0.29	0.00		0.00	0.05		0.00	0.05				0.01	0.01	739.08
Total	NA	NA	NA	NA	NA	NA	NA	NA	NA	NA	NA	NA	NA	NA	NA	NA

5.2 Energy by Land Use - NaturalGas

Unmitigated

Land Use	NaturalGas Use	ROG	NOx	CO	SO2	Fugitive PM10	Exhaust PM10	PM10 Total	Fugitive PM2.5	Exhaust PM2.5	PM2.5 Total	Bio- CO2	NBio- CO2	Total CO2	CH4	N2O	CO2e
Apartments Low Rise	4800.92	0.05	0.44	0.19	0.00		0.00	0.04		0.00	0.04				0.01	0.01	568.25
Condo/Townhouse	333.479	0.00	0.03	0.01	0.00		0.00	0.00		0.00	0.00				0.00	0.00	39.47
Regional Shopping Center	1109.51	0.01	0.11	0.09	0.00		0.00	0.01		0.00	0.01				0.00	0.00	131.36
Total		0.06	0.58	0.29	0.00		0.00	0.05		0.00	0.05				0.01	0.01	739.08

Mitigated

Land Use	NaturalGas Use	ROG	NOx	CO	SO2	Fugitive PM10	Exhaust PM10	PM10 Total	Fugitive PM2.5	Exhaust PM2.5	PM2.5 Total	Bio- CO2	NBio- CO2	Total CO2	CH4	N2O	CO2e
Apartments Low Rise	4.80092	0.05	0.44	0.19	0.00		0.00	0.04		0.00	0.04				0.01	0.01	568.25
Condo/Townhouse	0.333479	0.00	0.03	0.01	0.00		0.00	0.00		0.00	0.00				0.00	0.00	39.47
Regional Shopping Center	1.10981	0.01	0.11	0.09	0.00		0.00	0.01		0.00	0.01				0.00	0.00	131.36
Total		0.06	0.58	0.29	0.00		0.00	0.05		0.00	0.05				0.01	0.01	739.08

6.0 Area Detail

6.1 Mitigation Measures Area

Category	ROG	NOx	CO	SO2	Fugitive PM10	Exhaust PM10	PM10 Total	Fugitive PM2.5	Exhaust PM2.5	PM2.5 Total	Bio- CO2	NBio- CO2	Total CO2	CH4	N2O	CO2e
Mitigated	18.82	0.56	39.85	0.08		0.00	5.13		0.00	5.13				2.70	0.04	2,494.74
Unmitigated	18.82	0.56	39.85	0.08		0.00	5.13		0.00	5.13				2.70	0.04	2,494.74
Total	NA	NA	NA	NA	NA	NA	NA	NA	NA	NA	NA	NA	NA	NA	NA	NA

6.2 Area by SubCategory

Unmitigated

SubCategory	ROG	NOx	CO	SO2	Fugitive PM10	Exhaust PM10	PM10 Total	Fugitive PM2.5	Exhaust PM2.5	PM2.5 Total	Bio- CO2	NBio- CO2	Total CO2	CH4	N2O	CO2e
SubCategory	lb/day										lb/day					
Architectural Coating	1.72					0.00	0.00		0.00	0.00						0.00
Consumer Products	6.62					0.00	0.00		0.00	0.00						0.00
Hearth	10.24	0.47	31.84	0.08		0.00	5.09		0.00	5.09				2.69	0.04	2,479.98
Landscaping	0.24	0.09	8.01	0.00		0.00	0.04		0.00	0.04				0.01		14.76
Total	18.82	0.56	39.85	0.08		0.00	5.13		0.00	5.13				2.70	0.04	2,494.74

Mitigated

SubCategory	ROG	NOx	CO	SO2	Fugitive PM10	Exhaust PM10	PM10 Total	Fugitive PM2.5	Exhaust PM2.5	PM2.5 Total	Bio- CO2	NBio- CO2	Total CO2	CH4	N2O	CO2e
SubCategory	lb/day										lb/day					
Architectural Coating	1.72					0.00	0.00		0.00	0.00						0.00
Consumer Products	6.62					0.00	0.00		0.00	0.00						0.00
Hearth	10.24	0.47	31.84	0.08		0.00	5.09		0.00	5.09				2.69	0.04	2,479.98
Landscaping	0.24	0.09	8.01	0.00		0.00	0.04		0.00	0.04				0.01		14.76
Total	18.82	0.56	39.85	0.08		0.00	5.13		0.00	5.13				2.70	0.04	2,494.74

7.0 Water Detail

7.1 Mitigation Measures Water

- Install Low Flow Bathroom Faucet
- Install Low Flow Kitchen Faucet
- Install Low Flow Toilet
- Install Low Flow Shower
- Use Water Efficient Irrigation System

8.0 Waste Detail

8.1 Mitigation Measures Waste

- Institute Recycling and Composting Services

9.0 Vegetation

Artesia Boulevard Corridor Specific Plan Initial Study

Air Quality and GHG Analysis:
CalEEMod Future Conditions - Summer

2858 Artesia Blvd SP (Future Conditions)
 South Coast Air Basin, Summer

1.0 Project Characteristics

1.1 Land Usage

Land Uses	Size	Metric
Apartments Low Rise	91.27	Dwelling Unit
Condo/Townhouse	4.94	Dwelling Unit
Regional Shopping Center	238.28	1000sqft

1.2 Other Project Characteristics

Urbanization	Urban	Wind Speed (m/s)		Utility Company	Southern California Edison
Climate Zone	9	Precipitation Freq (Days)	2.2		
			31		

1.3 User Entered Comments

- Project Characteristics -
- Land Use -
- Construction Phase - No Construction Emissions Analysis
- Mobile Land Use Mitigation -
- Energy Mitigation -
- Water Mitigation -
- Waste Mitigation -
- Area Mitigation -

2.0 Emissions Summary

2.1 Overall Construction (Maximum Daily Emission)

Unmitigated Construction

Year	ROG	NOx	CO	SO2	Fugitive PM10	Exhaust PM10	PM10 Total	Fugitive PM2.5	Exhaust PM2.5	PM2.5 Total	Bio- CO2	NBio- CO2	Total CO2	CH4	N2O	CO2e
	lb/day										lb/day					

Mitigated Construction

Year	ROG	NOx	CO	SO2	Fugitive PM10	Exhaust PM10	PM10 Total	Fugitive PM2.5	Exhaust PM2.5	PM2.5 Total	Bio- CO2	NBio- CO2	Total CO2	CH4	N2O	CO2e
	lb/day										lb/day					

2.2 Overall Operational

Unmitigated Operational

Category	ROG	NOx	CO	SO2	Fugitive PM10	Exhaust PM10	PM10 Total	Fugitive PM2.5	Exhaust PM2.5	PM2.5 Total	Bio- CO2	NBio- CO2	Total CO2	CH4	N2O	CO2e
	lb/day										lb/day					
Area	18.82	0.56	39.85	0.08		0.00	5.13		0.00	5.13				2.70	0.04	2,494.74
Energy	0.07	0.58	0.29	0.00		0.00	0.05		0.00	0.05				0.01	0.01	739.08
Mobile	26.01	61.61	196.62	0.73	75.61	3.32	78.92	1.08	3.23	4.30				1.79		57,602.92
Total	44.90	62.75	236.96	0.81	75.61	3.32	84.10	1.08	3.23	9.48				4.50	0.05	60,836.74

Mitigated Operational

Category	ROG	NOx	CO	SO2	Fugitive PM10	Exhaust PM10	PM10 Total	Fugitive PM2.5	Exhaust PM2.5	PM2.5 Total	Bio- CO2	NBio- CO2	Total CO2	CH4	N2O	CO2e
	lb/day										lb/day					
Area	18.82	0.56	39.85	0.08		0.00	5.13		0.00	5.13				2.70	0.04	2,494.74
Energy	0.07	0.58	0.29	0.00		0.00	0.05		0.00	0.05				0.01	0.01	739.08
Mobile	20.92	51.50	142.20	0.46	48.27	2.20	50.47	0.88	2.14	2.83				1.22		57,843.94

Total	39.81	52.64	182.34	0.56	48.27	2.20	55.65	0.69	2.14	8.01					3.93	0.05	41,077.76
-------	-------	-------	--------	------	-------	------	-------	------	------	------	--	--	--	--	------	------	-----------

3.0 Construction Detail

3.1 Mitigation Measures Construction

Unmitigated Construction On-Site

	ROG	NOx	CO	SO2	Fugitive PM10	Exhaust PM10	PM10 Total	Fugitive PM2.5	Exhaust PM2.5	PM2.5 Total	Bio- CO2	NBio- CO2	Total CO2	CH4	N2O	CO2e	
Category	lb/day										lb/day						

Unmitigated Construction Off-Site

	ROG	NOx	CO	SO2	Fugitive PM10	Exhaust PM10	PM10 Total	Fugitive PM2.5	Exhaust PM2.5	PM2.5 Total	Bio- CO2	NBio- CO2	Total CO2	CH4	N2O	CO2e	
Category	lb/day										lb/day						

Mitigated Construction On-Site

	ROG	NOx	CO	SO2	Fugitive PM10	Exhaust PM10	PM10 Total	Fugitive PM2.5	Exhaust PM2.5	PM2.5 Total	Bio- CO2	NBio- CO2	Total CO2	CH4	N2O	CO2e	
Category	lb/day										lb/day						

Mitigated Construction Off-Site

	ROG	NOx	CO	SO2	Fugitive PM10	Exhaust PM10	PM10 Total	Fugitive PM2.5	Exhaust PM2.5	PM2.5 Total	Bio- CO2	NBio- CO2	Total CO2	CH4	N2O	CO2e	
Category	lb/day										lb/day						

4.0 Mobile Detail

4.1 Mitigation Measures Mobile

- Increase Density
- Increase Diversity
- Increase Transit Accessibility
- Improve Pedestrian Network

	ROG	NOx	CO	SO2	Fugitive PM10	Exhaust PM10	PM10 Total	Fugitive PM2.5	Exhaust PM2.5	PM2.5 Total	Bio- CO2	NBio- CO2	Total CO2	CH4	N2O	CO2e
Category	lb/day										lb/day					
Mitigated	20.92	51.50	142.20	0.48	48.27	2.20	50.47	0.69	2.14	2.83				1.22		37,843.94

Unmitigated	26.01	61.61	196.82	0.73	75.61	3.32	78.92	1.08	3.23	4.30					1.79		57,602.92
Total	NA	NA	NA	NA	NA	NA	NA	NA	NA	NA	NA	NA	NA	NA	NA	NA	NA

4.2 Trip Summary Information

Land Use	Average Daily Trip Rate			Unmitigated Annual VMT	Mitigated Annual VMT
	Weekday	Saturday	Sunday		
Apartments Low Rise	601.47	653.49	554.01	1,710,097	1,091,857
Condo/Townhouse	32.55	35.37	29.99	92,559	59,097
Regional Shopping Center	10,231.74	11,906.85	6014.19	17,302,552	11,047,275
Total	10,865.77	12,595.72	6,598.18	19,105,208	12,198,229

4.3 Trip Type Information

Land Use	Miles			Trip %		
	H-W or C-W	H-S or C-C	H-O or C-NW	H-W or C-W	H-S or C-C	H-O or C-NW
Apartments Low Rise	10.80	7.30	7.50	40.20	19.20	40.60
Condo/Townhouse	10.80	7.30	7.50	40.20	19.20	40.60
Regional Shopping Center	9.50	7.30	7.30	16.30	64.70	19.00

5.0 Energy Detail

5.1 Mitigation Measures Energy

Category	ROG	NOx	CO	SO2	Fugitive PM10	Exhaust PM10	PM10 Total	Fugitive PM2.5	Exhaust PM2.5	PM2.5 Total	Bio- CO2	NBio- CO2	Total CO2	CH4	N2O	CO2e
NaturalGas Mitigated	0.07	0.58	0.29	0.00		0.00	0.05		0.00	0.05				0.01	0.01	739.08
NaturalGas Unmitigated	0.07	0.58	0.29	0.00		0.00	0.05		0.00	0.05				0.01	0.01	739.08
Total	NA	NA	NA	NA	NA	NA	NA	NA	NA	NA	NA	NA	NA	NA	NA	NA

5.2 Energy by Land Use - NaturalGas

Unmitigated

Land Use	NaturalGas Use	ROG	NOx	CO	SO2	Fugitive PM10	Exhaust PM10	PM10 Total	Fugitive PM2.5	Exhaust PM2.5	PM2.5 Total	Bio- CO2	NBio- CO2	Total CO2	CH4	N2O	CO2e
Apartments Low Rise	4800.92	0.05	0.44	0.19	0.00		0.00	0.04		0.00	0.04				0.01	0.01	568.25
Condo/Townhouse	333.479	0.00	0.03	0.01	0.00		0.00	0.00		0.00	0.00				0.00	0.00	39.47
Regional Shopping Center	1109.51	0.01	0.11	0.09	0.00		0.00	0.01		0.00	0.01				0.00	0.00	131.36
Total		0.06	0.58	0.29	0.00		0.00	0.05		0.00	0.05				0.01	0.01	739.08

Mitigated

Land Use	NaturalGas Use	ROG	NOx	CO	SO2	Fugitive PM10	Exhaust PM10	PM10 Total	Fugitive PM2.5	Exhaust PM2.5	PM2.5 Total	Bio- CO2	NBio- CO2	Total CO2	CH4	N2O	CO2e
Apartments Low Rise	4.80092	0.05	0.44	0.19	0.00		0.00	0.04		0.00	0.04				0.01	0.01	568.25
Condo/Townhouse	0.333479	0.00	0.03	0.01	0.00		0.00	0.00		0.00	0.00				0.00	0.00	39.47
Regional Shopping Center	1.10951	0.01	0.11	0.09	0.00		0.00	0.01		0.00	0.01				0.00	0.00	131.36
Total		0.06	0.58	0.29	0.00		0.00	0.05		0.00	0.05				0.01	0.01	739.08

6.0 Area Detail

6.1 Mitigation Measures Area

Category	ROG	NOx	CO	SO2	Fugitive PM10	Exhaust PM10	PM10 Total	Fugitive PM2.5	Exhaust PM2.5	PM2.5 Total	Bio- CO2	NBio- CO2	Total CO2	CH4	N2O	CO2e
Mitigated	18.82	0.56	39.85	0.08		0.00	5.13		0.00	5.13				2.70	0.04	2,494.74
Unmitigated	18.82	0.56	39.85	0.08		0.00	5.13		0.00	5.13				2.70	0.04	2,494.74
Total	NA	NA	NA	NA	NA	NA	NA	NA	NA	NA	NA	NA	NA	NA	NA	NA

6.2 Area by SubCategory

Unmitigated

SubCategory	ROG	NOx	CO	SO2	Fugitive PM10	Exhaust PM10	PM10 Total	Fugitive PM2.5	Exhaust PM2.5	PM2.5 Total	Bio- CO2	NBio- CO2	Total CO2	CH4	N2O	CO2e
SubCategory	lb/day										lb/day					
Architectural Coating	1.72					0.00	0.00		0.00	0.00						0.00
Consumer Products	6.62					0.00	0.00		0.00	0.00						0.00
Hearth	10.24	0.47	31.84	0.08		0.00	5.09		0.00	5.09				2.69	0.04	2,479.98
Landscaping	0.24	0.09	8.01	0.00		0.00	0.04		0.00	0.04				0.01		14.76
Total	18.82	0.56	39.85	0.08		0.00	5.13		0.00	5.13				2.70	0.04	2,494.74

Mitigated

SubCategory	ROG	NOx	CO	SO2	Fugitive PM10	Exhaust PM10	PM10 Total	Fugitive PM2.5	Exhaust PM2.5	PM2.5 Total	Bio- CO2	NBio- CO2	Total CO2	CH4	N2O	CO2e
SubCategory	lb/day										lb/day					
Architectural Coating	1.72					0.00	0.00		0.00	0.00						0.00
Consumer Products	6.62					0.00	0.00		0.00	0.00						0.00
Hearth	10.24	0.47	31.84	0.08		0.00	5.09		0.00	5.09				2.69	0.04	2,479.98
Landscaping	0.24	0.09	8.01	0.00		0.00	0.04		0.00	0.04				0.01		14.76
Total	18.82	0.56	39.85	0.08		0.00	5.13		0.00	5.13				2.70	0.04	2,494.74

7.0 Water Detail

7.1 Mitigation Measures Water

- Install Low Flow Bathroom Faucet
- Install Low Flow Kitchen Faucet
- Install Low Flow Toilet
- Install Low Flow Shower
- Use Water Efficient Irrigation System

8.0 Waste Detail

8.1 Mitigation Measures Waste

- Institute Recycling and Composting Services

9.0 Vegetation

Artesia Boulevard Corridor Specific Plan Initial Study

Air Quality and GHG Analysis:
CalEEMod Future Conditions - Annual

2858 Artesia Blvd SP (Future Conditions)
 South Coast Air Basin, Annual

1.0 Project Characteristics

1.1 Land Usage

Land Uses	Size	Metric
Apartments Low Rise	91.27	Dwelling Unit
Condo/Townhouse	4.94	Dwelling Unit
Regional Shopping Center	238.28	1000sqft

1.2 Other Project Characteristics

Urbanization	Urban	Wind Speed (m/s)		Utility Company	Southern California Edison
Climate Zone	9		2.2		
		Precipitation Freq (Days)	31		

1.3 User Entered Comments

- Project Characteristics -
- Land Use -
- Construction Phase - No Construction Emissions Analysis
- Mobile Land Use Mitigation -
- Energy Mitigation -
- Water Mitigation -
- Waste Mitigation -
- Area Mitigation -

2.0 Emissions Summary

2.1 Overall Construction

Unmitigated Construction

Year	ROG	NOx	CO	SO2	Fugitive PM10	Exhaust PM10	PM10 Total	Fugitive PM2.5	Exhaust PM2.5	PM2.5 Total	Bio-CO2	NBio-CO2	Total CO2	CH4	N2O	CO2e
	tons/yr										M/yr					

Mitigated Construction

Year	ROG	NOx	CO	SO2	Fugitive PM10	Exhaust PM10	PM10 Total	Fugitive PM2.5	Exhaust PM2.5	PM2.5 Total	Bio-CO2	NBio-CO2	Total CO2	CH4	N2O	CO2e
	tons/yr										M/yr					

2.2 Overall Operational

Unmitigated Operational

Category	ROG	NOx	CO	SO2	Fugitive PM10	Exhaust PM10	PM10 Total	Fugitive PM2.5	Exhaust PM2.5	PM2.5 Total	Bio-CO2	NBio-CO2	Total CO2	CH4	N2O	CO2e
	tons/yr										M/yr					
Area	1.88	0.02	2.06	0.00		0.00	0.10		0.00	0.10			71.53	0.03	0.00	72.67
Energy	0.01	0.11	0.05	0.00		0.00	0.01		0.00	0.01			1,273.81	0.05	0.02	1,281.77
Mobile	3.79	9.28	30.24	0.10	10.38	0.51	10.89	0.16	0.49	0.65			7,585.54	0.22	0.00	7,590.34
Waste						0.00	0.00		0.00	0.00			59.77	3.53	0.00	133.95
Water					0.00	0.00	0.00		0.00	0.00			136.59	0.74	0.02	160.40
Total	5.68	9.41	32.35	0.10	10.38	0.51	11.00	0.16	0.49	0.77			9,129.34	4.57	0.04	9,239.13

Mitigated Operational

Category	ROG	NOx	CO	SO2	Fugitive PM10	Exhaust PM10	PM10 Total	Fugitive PM2.5	Exhaust PM2.5	PM2.5 Total	Bio-CO2	NBio-CO2	Total CO2	CH4	N2O	CO2e
	tons/yr										M/yr					
Area	1.88	0.02	2.06	0.00		0.00	0.10		0.00	0.10			71.53	0.03	0.00	72.67
Energy	0.01	0.11	0.05	0.00		0.00	0.01		0.00	0.01			1,273.81	0.05	0.02	1,281.77
Mobile	3.00	7.73	22.59	0.07	6.63	0.34	6.96	0.10	0.33	0.43			4,985.54	0.16	0.00	4,989.12
Waste						0.00	0.00		0.00	0.00			29.88	1.77	0.00	66.97
Water					0.00	0.00	0.00		0.00	0.00			117.50	0.59	0.02	134.99
Total	4.89	7.86	24.70	0.07	6.63	0.34	7.07	0.10	0.33	0.54			6,478.56	2.60	0.04	6,545.52

3.0 Construction Detail

3.1 Mitigation Measures Construction

Unmitigated Construction On-Site

	ROG	NOx	CO	SO2	Fugitive PM10	Exhaust PM10	PM10 Total	Fugitive PM2.5	Exhaust PM2.5	PM2.5 Total	Bio-CO2	NBio-CO2	Total CO2	CH4	N2O	CO2e
Category	tons/yr										Mt/yr					

Unmitigated Construction Off-Site

	ROG	NOx	CO	SO2	Fugitive PM10	Exhaust PM10	PM10 Total	Fugitive PM2.5	Exhaust PM2.5	PM2.5 Total	Bio-CO2	NBio-CO2	Total CO2	CH4	N2O	CO2e
Category	tons/yr										Mt/yr					

Mitigated Construction On-Site

	ROG	NOx	CO	SO2	Fugitive PM10	Exhaust PM10	PM10 Total	Fugitive PM2.5	Exhaust PM2.5	PM2.5 Total	Bio-CO2	NBio-CO2	Total CO2	CH4	N2O	CO2e
Category	tons/yr										Mt/yr					

Mitigated Construction Off-Site

	ROG	NOx	CO	SO2	Fugitive PM10	Exhaust PM10	PM10 Total	Fugitive PM2.5	Exhaust PM2.5	PM2.5 Total	Bio-CO2	NBio-CO2	Total CO2	CH4	N2O	CO2e
Category	tons/yr										Mt/yr					

4.0 Mobile Detail

4.1 Mitigation Measures Mobile

- Increase Density
- Increase Diversity
- Increase Transit Accessibility
- Improve Pedestrian Network

	ROG	NOx	CO	SO2	Fugitive PM10	Exhaust PM10	PM10 Total	Fugitive PM2.5	Exhaust PM2.5	PM2.5 Total	Bio-CO2	NBio-CO2	Total CO2	CH4	N2O	CO2e
Category	tons/yr										Mt/yr					
Mitigated	3.00	7.73	22.59	0.07	6.63	0.34	6.96	0.10	0.33	0.43			4,985.84	0.16	0.00	4,989.12
Unmitigated	3.79	9.28	30.24	0.10	10.38	0.51	10.89	0.16	0.49	0.66			7,565.64	0.22	0.00	7,590.34
Total	NA	NA	NA	NA	NA	NA	NA	NA	NA	NA	NA	NA	NA	NA	NA	NA

4.2 Trip Summary Information

Land Use	Average Daily Trip Rate			Unmitigated Annual VMT	Mitigated Annual VMT
	Weekday	Saturday	Sunday		
Apartments Low Rise	601.47	653.49	554.01	1,710,097	1,091,857
Condo/Townhouse	32.55	35.37	29.99	92,559	59,097
Regional Shopping Center	10,231.74	11,906.85	6,014.19	17,302,552	11,047,275
Total	10,865.77	12,595.72	6,598.18	19,105,208	12,198,229

4.3 Trip Type Information

Land Use	Miles			Trip %		
	H-W or C-W	H-S or C-C	H-O or C-NW	H-W or C-W	H-S or C-C	H-O or C-NW
Apartments Low Rise	10.80	7.30	7.50	40.20	19.20	40.60
Condo/Townhouse	10.80	7.30	7.50	40.20	19.20	40.60
Regional Shopping Center	9.50	7.30	7.30	16.30	64.70	19.00

5.0 Energy Detail

5.1 Mitigation Measures Energy

Category	ROG	NOx	CO	SO2	Fugitive PM10	Exhaust PM10	PM10 Total	Fugitive PM2.5	Exhaust PM2.5	PM2.5 Total	Bio-CO2	NBio-CO2	Total CO2	CH4	N2O	CO2e
	tons/yr										M/yr					
Electricity Mitigated							0.00	0.00		0.00			1,152.19	0.05	0.02	1,159.41
Electricity Unmitigated							0.00	0.00		0.00			1,152.19	0.05	0.02	1,159.41
NaturalGas Mitigated	0.01	0.11	0.05	0.00			0.00	0.01		0.00			121.62	0.00	0.00	122.36
NaturalGas Unmitigated	0.01	0.11	0.05	0.00			0.00	0.01		0.00			121.62	0.00	0.00	122.36
Total	NA	NA	NA	NA	NA	NA	NA	NA	NA	NA	NA	NA	NA	NA	NA	NA

5.2 Energy by Land Use - NaturalGas

Unmitigated

Land Use	NaturalGas Use	ROG	NOx	CO	SO2	Fugitive PM10	Exhaust PM10	PM10 Total	Fugitive PM2.5	Exhaust PM2.5	PM2.5 Total	Bio-CO2	NBio-CO2	Total CO2	CH4	N2O	CO2e
	kBTU	tons/yr							M/yr								
Apartments Low Rise	1.75234e+006	0.01	0.08	0.03	0.00		0.00	0.01		0.00	0.01			93.51	0.00	0.00	94.08
Condo/Townhouse	121720	0.00	0.01	0.00	0.00		0.00	0.00		0.00	0.00			6.50	0.00	0.00	6.53
Regional Shopping Center	405081	0.00	0.02	0.02	0.00		0.00	0.00		0.00	0.00			21.62	0.00	0.00	21.75
Total		0.01	0.11	0.05	0.00		0.00	0.01		0.00	0.01			121.63	0.00	0.00	122.36

Mitigated

Land Use	NaturalGas Use	ROG	NOx	CO	SO2	Fugitive PM10	Exhaust PM10	PM10 Total	Fugitive PM2.5	Exhaust PM2.5	PM2.5 Total	Bio-CO2	NBio-CO2	Total CO2	CH4	N2O	CO2e
	kBTU	tons/yr							M/yr								
Apartments Low Rise	1.75234e+006	0.01	0.08	0.03	0.00		0.00	0.01		0.00	0.01			93.51	0.00	0.00	94.08
Condo/Townhouse	121720	0.00	0.01	0.00	0.00		0.00	0.00		0.00	0.00			6.50	0.00	0.00	6.53
Regional Shopping Center	405081	0.00	0.02	0.02	0.00		0.00	0.00		0.00	0.00			21.62	0.00	0.00	21.75
Total		0.01	0.11	0.05	0.00		0.00	0.01		0.00	0.01			121.63	0.00	0.00	122.36

5.3 Energy by Land Use - Electricity

Unmitigated

Land Use	Electricity Use	ROG	NOx	CO	SO2	Total CO2	CH4	N2O	CO2e
	kWh	tons/yr				M/yr			
Apartments Low Rise	324948					94.52	0.00	0.00	95.11
Condo/Townhouse	214822					6.24	0.00	0.00	6.28
Regional Shopping Center	3.61475e+006					1,051.43	0.05	0.02	1,058.02
Total						1,152.19	0.05	0.02	1,159.41

Mitigated

Land Use	Electricity Use	ROG	NOx	CO	SO2	Total CO2	CH4	N2O	CO2e
	kWh	tons/yr				M/yr			
Apartments Low Rise	324948					94.52	0.00	0.00	95.11
Condo/Townhouse	214822					6.24	0.00	0.00	6.28
Regional Shopping Center	3.61475e+006					1,051.43	0.05	0.02	1,058.02
Total						1,152.19	0.05	0.02	1,159.41

6.0 Area Detail

6.1 Mitigation Measures Area

Category	ROG	NOx	CO	SO2	Fugitive PM10	Exhaust PM10	PM10 Total	Fugitive PM2.5	Exhaust PM2.5	PM2.5 Total	Bio-CO2	NBio-CO2	Total CO2	CH4	N2O	CO2e
	tons/yr										MT/yr					
Mitigated	1.88	0.02	2.06	0.00		0.00	0.10		0.00	0.10			71.53	0.03	0.00	72.67
Unmitigated	1.88	0.02	2.06	0.00		0.00	0.10		0.00	0.10			71.53	0.03	0.00	72.67
Total	NA	NA	NA	NA	NA	NA	NA	NA	NA	NA	NA	NA	NA	NA	NA	NA

6.2 Area by SubCategory

Unmitigated

SubCategory	ROG	NOx	CO	SO2	Fugitive PM10	Exhaust PM10	PM10 Total	Fugitive PM2.5	Exhaust PM2.5	PM2.5 Total	Bio-CO2	NBio-CO2	Total CO2	CH4	N2O	CO2e
	tons/yr										MT/yr					
Architectural Coating	0.31					0.00	0.00		0.00	0.00			0.00	0.00	0.00	0.00
Consumer Products	1.21					0.00	0.00		0.00	0.00			0.00	0.00	0.00	0.00
Hearth	0.32	0.01	0.60	0.00		0.00	0.09		0.00	0.09			69.13	0.03	0.00	70.23
Landscaping	0.04	0.02	1.46	0.00		0.00	0.01		0.00	0.01			2.39	0.00	0.00	2.44
Total	1.88	0.03	2.06	0.00		0.00	0.10		0.00	0.10			71.52	0.03	0.00	72.67

Mitigated

SubCategory	ROG	NOx	CO	SO2	Fugitive PM10	Exhaust PM10	PM10 Total	Fugitive PM2.5	Exhaust PM2.5	PM2.5 Total	Bio-CO2	NBio-CO2	Total CO2	CH4	N2O	CO2e
	tons/yr										MT/yr					
Architectural Coating	0.31					0.00	0.00		0.00	0.00			0.00	0.00	0.00	0.00
Consumer Products	1.21					0.00	0.00		0.00	0.00			0.00	0.00	0.00	0.00
Hearth	0.32	0.01	0.60	0.00		0.00	0.09		0.00	0.09			69.13	0.03	0.00	70.23
Landscaping	0.04	0.02	1.46	0.00		0.00	0.01		0.00	0.01			2.39	0.00	0.00	2.44
Total	1.88	0.03	2.06	0.00		0.00	0.10		0.00	0.10			71.52	0.03	0.00	72.67

7.0 Water Detail

7.1 Mitigation Measures Water

- Install Low Flow Bathroom Faucet
- Install Low Flow Kitchen Faucet
- Install Low Flow Toilet
- Install Low Flow Shower
- Use Water Efficient Irrigation System

Category	ROG	NOx	CO	SO2	Total CO2	CH4	N2O	CO2e
	tons/yr				MT/yr			
Mitigated					117.50	0.59	0.02	134.99
Unmitigated					138.59	0.74	0.02	160.40
Total	NA	NA	NA	NA	NA	NA	NA	NA

7.2 Water by Land Use

Unmitigated

Land Use	Indoor/Outdoor Use	ROG	NOx	CO	SO2	Total CO2	CH4	N2O	CO2e
	Mgal	tons/yr				MT/yr			
Apartments Low Rise	5.94661 / 3.74895					34.70	0.18	0.01	40.13
Condo/ownhouse	0.321861 / 0.202817					1.88	0.01	0.00	2.17
Regional Shopping Center	17.95 / 10.8177					102.00	0.54	0.02	118.10
Total						138.58	0.73	0.03	160.40

Mitigated

Land Use	Indoor/Outdoor Use	ROG	NOx	CO	SO2	Total CO2	CH4	N2O	CO2e
	Mgal	tons/yr				MT/yr			
Apartments Low Rise	4.75729 / 3.52026					29.45	0.15	0.00	33.80
Condo/ownhouse	0.257489 / 0.162537					1.59	0.01	0.00	1.83
Regional Shopping Center	14.12 / 8.9257					86.46	0.43	0.01	99.37

Total						117.50	0.59	0.01	135.00
-------	--	--	--	--	--	--------	------	------	--------

8.0 Waste Detail

8.1 Mitigation Measures Waste

Institute Recycling and Composting Services

Category/Year

	ROG	NOx	CO	SO2	Total CO2	CH4	N2O	CO2e
	tons/yr				Mt/yr			
Mitigated					29.88	1.77	0.00	66.97
Unmitigated					59.77	3.53	0.00	133.95
Total	NA	NA	NA	NA	NA	NA	NA	NA

8.2 Waste by Land Use

Unmitigated

	Waste Disposed	ROG	NOx	CO	SO2	Total CO2	CH4	N2O	CO2e
Land Use	tons	tons/yr				Mt/yr			
Apartments Low Ris	41.98					6.52	0.50	0.00	19.10
Condo/ownhouse	2.27					0.46	0.03	0.00	1.03
Regional Shopping Center	250.19					59.79	3.00	0.00	113.82
Total						59.77	3.53	0.00	133.95

Mitigated

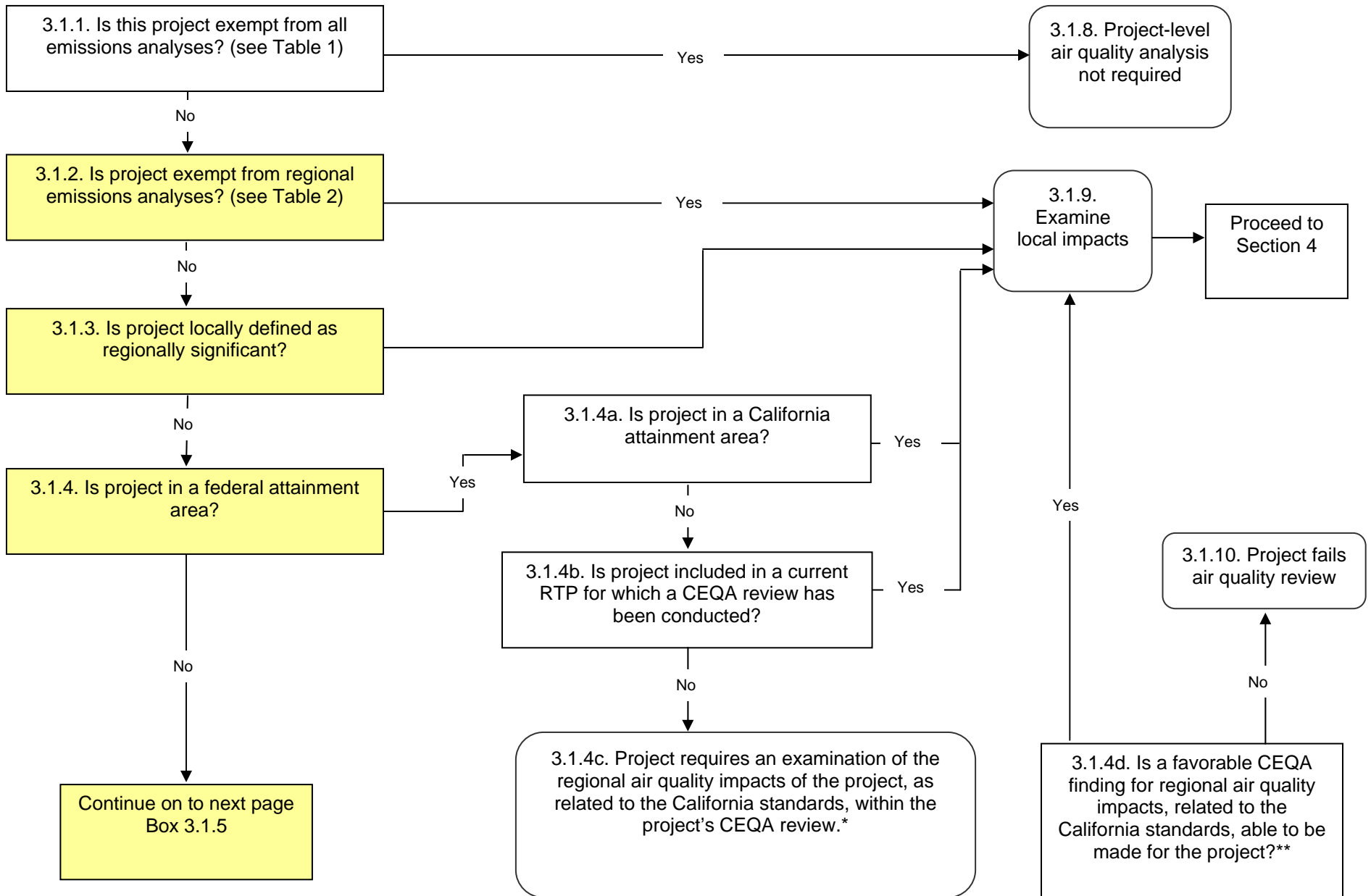
	Waste Disposed	ROG	NOx	CO	SO2	Total CO2	CH4	N2O	CO2e
Land Use	tons	tons/yr				Mt/yr			
Apartments Low Ris	20.99					4.26	0.25	0.00	9.55
Condo/ownhouse	1.135					0.23	0.01	0.00	0.52
Regional Shopping Center	125.095					25.39	1.50	0.00	56.91
Total						29.88	1.76	0.00	66.98

9.0 Vegetation

Artesia Boulevard Corridor Specific Plan Initial Study

Air Quality and GHG Analysis: Carbon Monoxide Hotspot Appendix

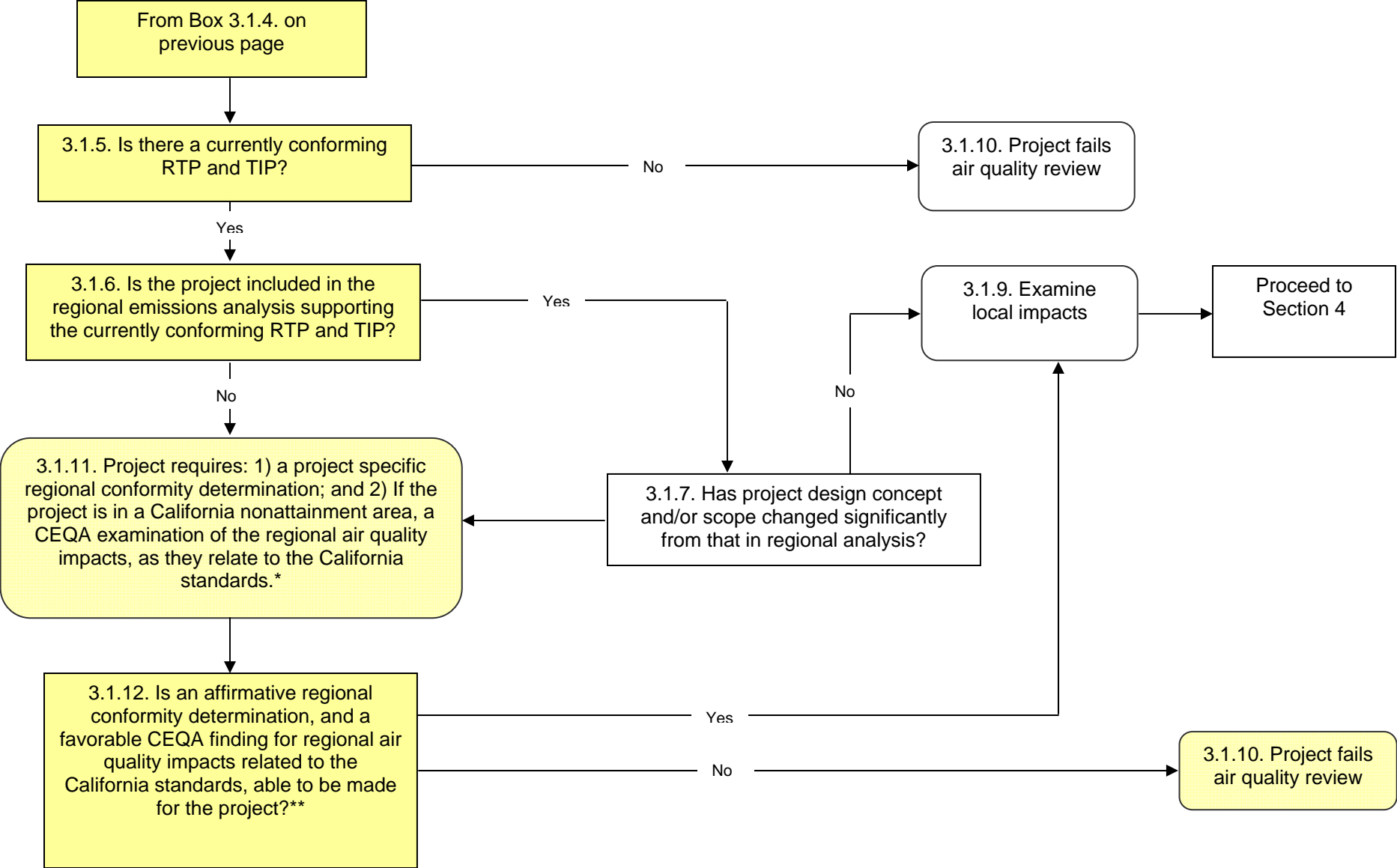
2858 Artesia Boulevard Specific Plan



* In consultation w/MPO and Caltrans

** In consultation w/MPO, local air district, CARB and Caltrans

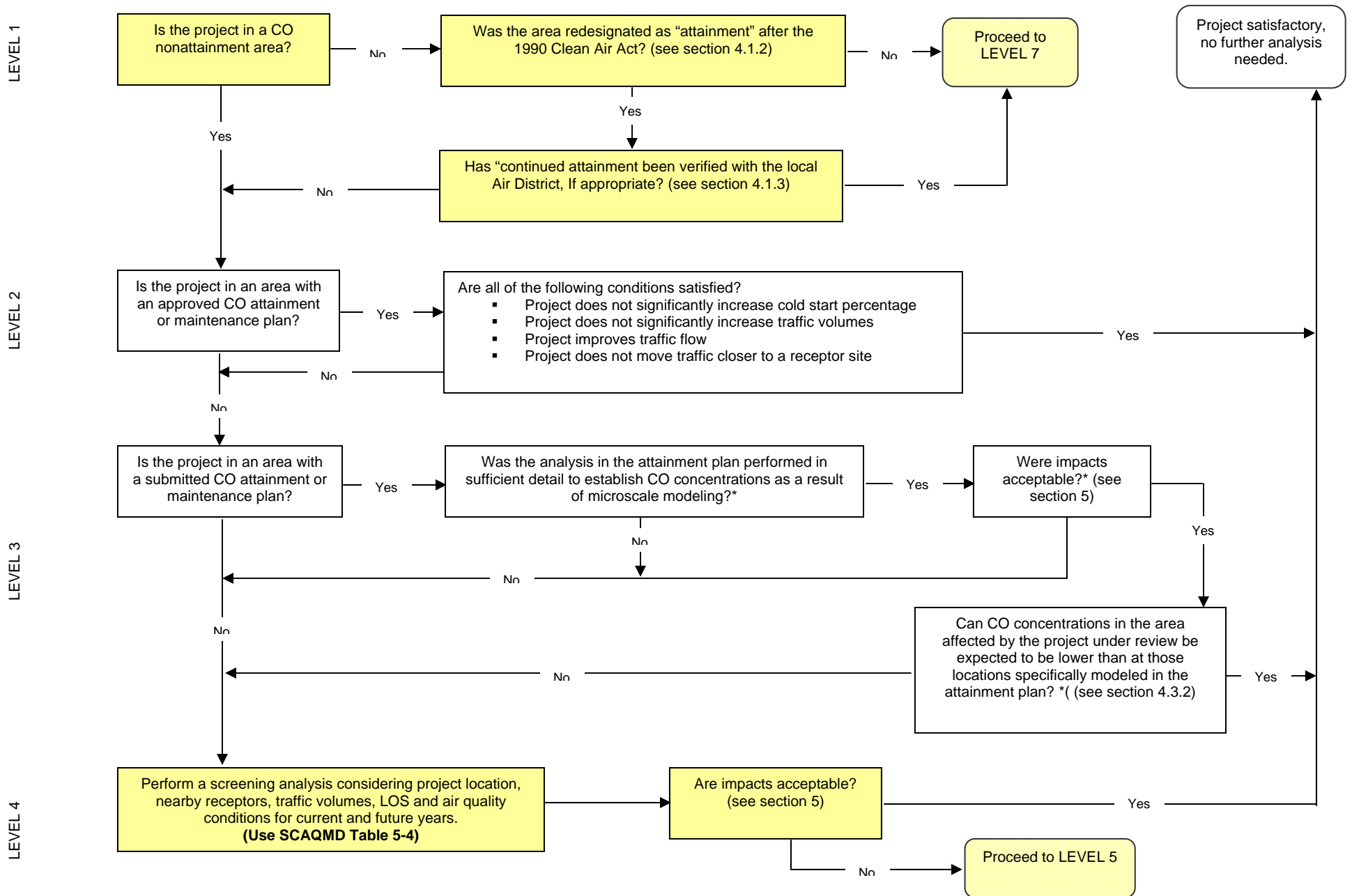
2858 Artesia Boulevard Specific Plan



* In consultation w/MPO and Caltrans

** In consultation w/MPO, local air district, CARB and Caltrans

2858 Artesia Boulevard Specific Plan

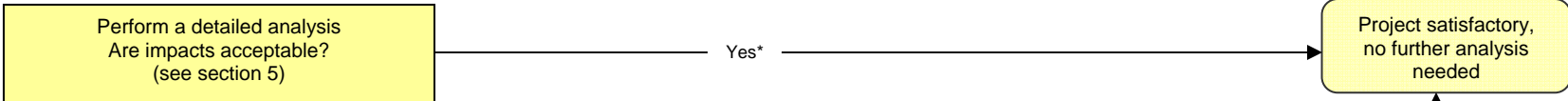


* Consultation with MPO and Local Air District required in addition to normal NEPA/CEQA requirements

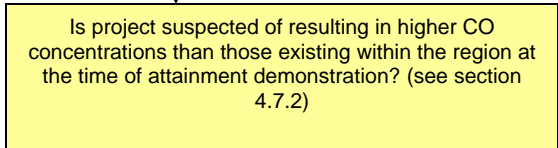
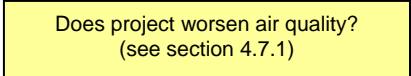
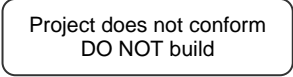
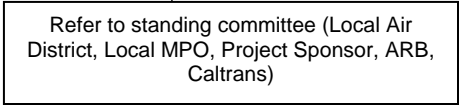
** Consultation with MPO, Local Air District, CARB and Caltrans (District & Headquarters) required in addition to normal NEPA/CEQA requirements

2858 Artesia Boulevard Specific Plan

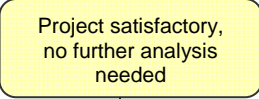
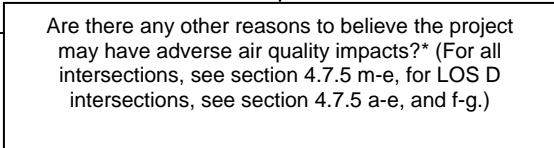
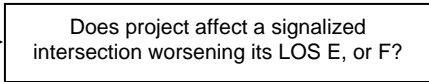
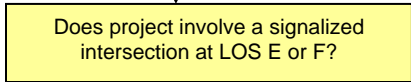
LEVEL 5



LEVEL 6



LEVEL 7



* Consultation with MPO and Local Air District required in addition to normal NEPA/CEQA requirements
 ** Consultation with MPO, Local Air District, CARB and Caltrans (District & Headquarters) required in addition to normal NEPA/CEQA requirements

JOB TITLE ARTESIA SP - CO HOTSPOTS
 JOB NO. 2858 CALCULATION NO. 1 ORIGINATOR CB DATE 9/30/11
 SHEET 1 OF 1 REVIEWER - DATE -

SCAQMD CO IMPACTS EVALUATION (PAGE 5-3)

- (1) BACKGROUND CONCENTRATIONS
 1 LONG BEACH SRA

1-HR = 5.1 PPM (TABLE 2)

8-HR = 3.9 PPM (TABLE 3)

- (2) SCREENING (TABLE 5-4)

ARTESIA @ GRIDLEY, PM PEAK = LOS C

PERSISTENCE FACTOR

1-HR ISM = 10.8 8-HR 7.9

0.73 (2.2 → 3.0)

30M = 7.1 5.2

60M = 4.4 3.2

(SRA 4, 2001)

ARTESTA @ PIONEER, PM PEAK = LOS D

2-HR ISM = 12.5 8-HR 9.2

30M = 8.3 6.1

60M = 5.3 3.9

- (3) BACKGROUND + SCREENING

15.9 11.8

12.2 9.1

9.5 7.1

17.6 13.1

13.4 10.0

10.4 7.8

- (4) COMPARE TO AMBIENT STD

1-HR = 20 PPM

8-HR = 9 PPM

- (5) FAILS SCREENING

Project 2858

CALINE Roadway Data (2030 + Project)

Roadway	Direction	Extent	Length (M)	ID	Start		End		Road Width	Mix	Width	Volume	EMFAC	Type	Delay	Cruise Speed	AVG Speed
					X	Y	X	Y									
Artesia	E	Extent	600	ART1EE	0	-6.25	600	-6.25	25	31	1024	0.977	II	35.0%	28	28	
Artesia	W	Extent	600	ART1WE	0	6.25	600	6.25	25	31	772	0.977	II	35.0%	28	28	
Artesia	E	Approach	150	ART2EA	600	-6.25	750	-6.25	25	31	913	1.779	II	35.0%	28	4.6	
Artesia	E	Left	150	ART2EL	600	-6.25	750	0	25	31	111	1.306	II	35.0%	28	12.5	
Artesia	W	Departure	150	ART2WD	600	6.25	750	6.25	25	31	772	1.164	II	35.0%	28	21	
Artesia	E	Departure	150	ART3ED	750	-6.25	900	-6.25	25	31	1100	1.306	II	35.0%	28	13.2	
Artesia	W	Approach	150	ART3WA	750	6.25	900	6.25	25	31	721	1.506	II	35.0%	28	8.6	
Artesia	W	Left	150	ART3WL	750	0	900	6.25	25	31	238	1.306	II	35.0%	28	12.5	
Artesia	E	Extent	600	ART4EE	900	-6.25	1500	-6.25	25	31	1100	0.977	II	35.0%	28	28	
Artesia	W	Extent	600	ART4WE	900	6.25	1500	6.25	25	31	959	0.977	II	35.0%	28	28	
Gridley	N	Extent	600	GRIANE	755	-750	755	-150	20	26	704	1.061	III	35.0%	24	24	
Gridley	S	Extent	600	GRIASE	745	-750	745	-150	20	26	628	1.061	III	35.0%	24	24	
Gridley	N	Approach	150	GRIBNA	755	-150	755	0	20	26	566	1.506	III	35.0%	24	9.9	
Gridley	N	Left	150	GRIBNL	755	-150	750	0	20	26	138	1.306	III	35.0%	24	12.5	
Gridley	S	Departure	150	GRIBSD	745	-150	745	-150	20	26	628	1.164	III	35.0%	24	20.8	
Gridley	N	Departure	150	GRICND	755	0	755	150	20	26	638	1.164	III	35.0%	24	20.8	
Gridley	S	Left	150	GRICSL	745	0	750	150	20	26	131	1.306	III	35.0%	24	12.5	
Gridley	S	Approach	150	GRICSA	745	0	745	150	20	26	320	1.506	III	35.0%	24	12	
Gridley	N	Extent	200	GRIDNE	755	150	709	345	12	18	638	1.061	III	35.0%	24	24	
Gridley	S	Extent	200	GRIDSE	745	150	699	345	12	18	451	1.061	III	35.0%	24	24	
Artesia	E	Extent	600	ART1EE	0	-6.25	600	-6.25	25	31	1361	0.977	II	55.0%	28	28	
Artesia	W	Extent	600	ART1WE	0	6.25	600	6.25	25	31	1146	0.977	II	55.0%	28	28	
Artesia	E	Approach	150	ART2EA	600	-6.25	750	-6.25	25	31	887	1.779	II	55.0%	28	3	
Artesia	E	Left	150	ART2EL	600	-6.25	750	0	25	31	474	1.779	II	55.0%	28	6.1	
Artesia	W	Departure	150	ART2WD	600	6.25	750	6.25	25	31	1146	1.779	II	55.0%	28	3	
Artesia	E	Departure	150	ART3ED	750	-6.25	900	-6.25	25	31	1072	1.779	II	55.0%	28	3	
Artesia	W	Approach	150	ART3WA	750	6.25	900	6.25	25	31	858	1.779	II	55.0%	28	3	
Artesia	W	Left	150	ART3WL	750	0	900	6.25	25	31	240	1.506	II	55.0%	28	9.1	
Artesia	E	Extent	600	ART4EE	900	-6.25	1500	-6.25	25	31	1072	0.977	II	55.0%	28	28	
Artesia	W	Extent	600	ART4WE	900	6.25	1500	6.25	25	31	1098	0.977	II	55.0%	28	28	
Pioneer	N	Extent	600	PIOANE	756	-750	756	-150	24	30	1384	0.977	II	55.0%	28	28	
Pioneer	S	Extent	600	PIOASE	744	-750	744	-150	24	30	1181	0.977	II	55.0%	28	28	
Pioneer	N	Approach	150	PIOBNA	756	-150	756	0	24	30	1221	1.779	II	55.0%	28	3	
Pioneer	N	Left	150	PIOBNL	756	-150	750	0	24	30	163	1.506	II	55.0%	28	9.1	
Pioneer	S	Departure	150	PIOBSD	744	-150	744	0	24	30	1181	1.779	II	55.0%	28	3	
Pioneer	N	Departure	150	PIOCND	756	0	756	150	24	30	1707	1.779	II	55.0%	28	3	
Pioneer	S	Approach	150	PIOCSA	744	0	744	150	24	30	1070	1.779	II	55.0%	28	3	
Pioneer	S	Left	150	PIOCSL	744	0	750	150	24	30	193	1.506	II	55.0%	28	9.1	
Pioneer	N	Extent	600	PIODNE	756	150	756	750	24	30	1707	0.977	II	55.0%	28	28	
Pioneer	S	Extent	600	PIODSE	744	150	744	750	24	30	1263	0.977	II	55.0%	28	28	

CALINE4: CALIFORNIA LINE SOURCE DISPERSION MODEL
 JUNE 1989 VERSION
 PAGE 1

JOB: 2858 Artesia @ Gridley Future + Project
 RUN: Hour 1
 POLLUTANT: Carbon Monoxide

I. SITE VARIABLES

U= .5 M/S	Z0= 100. CM	ALT= 18. (M)
BRG= 270.0 DEGREES	VD= .0 CM/S	
CLAS= 7 (G)	VS= .0 CM/S	
MIXH= 1000. M	AMB= 5.1 PPM	
SIGTH= 10. DEGREES	TEMP= 26.2 DEGREE (C)	

II. LINK VARIABLES

LINK	*	LINK COORDINATES (M)				*		EF	H	W
DESCRIPTION	*	X1	Y1	X2	Y2	* TYPE	VPH	(G/MI)	(M)	(M)
A. ART1EE	*	0	-6	600	-6	* FL	1024	1.0	.0	31.0
B. ART1WE	*	0	6	600	6	* FL	772	1.0	.0	31.0
C. ART2EA	*	600	-6	750	-6	* FL	913	1.8	.0	31.0
D. ART2EL	*	600	-6	750	0	* FL	111	1.3	.0	31.0
E. ART2WD	*	600	6	750	6	* FL	772	1.2	.0	31.0
F. ART3ED	*	750	-6	900	-6	* FL	1100	1.3	.0	31.0
G. ART3WA	*	750	6	900	6	* FL	721	1.5	.0	31.0
H. ART3WL	*	750	0	900	6	* FL	238	1.3	.0	31.0
I. ART4EE	*	900	-6	1500	-6	* FL	1100	1.0	.0	31.0
J. ART4WE	*	900	6	1500	6	* FL	959	1.0	.0	31.0
K. GRIANE	*	755	-750	755	-150	* FL	704	1.1	.0	26.0
L. GRIASE	*	745	-750	745	-150	* FL	628	1.1	.0	26.0
M. GRIBNA	*	755	-150	755	0	* FL	566	1.5	.0	26.0
N. GRIBNL	*	755	-150	750	0	* FL	138	1.3	.0	26.0
O. GRIBSD	*	745	-150	745	0	* FL	628	1.2	.0	26.0
P. GRICND	*	755	0	755	150	* FL	638	1.2	.0	26.0
Q. GRICSL	*	750	0	745	150	* FL	131	1.3	.0	26.0
R. GRICSA	*	745	0	745	150	* FL	320	1.5	.0	26.0
S. GRIDNE	*	755	150	709	345	* FL	638	1.1	.0	18.0
T. GRIDSE	*	745	150	699	345	* FL	451	1.1	.0	18.0

CALINE4: CALIFORNIA LINE SOURCE DISPERSION MODEL
 JUNE 1989 VERSION
 PAGE 1

JOB: 2858 Artesia @ Pioneer Future + Project
 RUN: Hour 1
 POLLUTANT: Carbon Monoxide

I. SITE VARIABLES

U= .5 M/S Z0= 100. CM ALT= 18. (M)
 BRG= 270.0 DEGREES VD= .0 CM/S
 CLAS= 7 (G) VS= .0 CM/S
 MIXH= 1000. M AMB= 5.1 PPM
 SIGTH= 10. DEGREES TEMP= 26.2 DEGREE (C)

II. LINK VARIABLES

LINK DESCRIPTION	*	LINK COORDINATES (M)				*	EF (G/MI)	H (M)	W (M)
	*	X1	Y1	X2	Y2	* TYPE	VPH		
A. ART1EE	*	0	-6	600	-6	* FL	1361	1.0	.0 31.0
B. ART1WE	*	0	6	600	6	* FL	1146	1.0	.0 31.0
C. ART2EA	*	600	-6	750	-6	* FL	887	1.8	.0 31.0
D. ART2EL	*	600	-6	750	0	* FL	474	1.8	.0 31.0
E. ART2WD	*	600	6	750	6	* FL	1146	1.8	.0 31.0
F. ART3ED	*	750	-6	900	-6	* FL	1072	1.8	.0 31.0
G. ART3WA	*	750	6	900	6	* FL	858	1.8	.0 31.0
H. ART3WL	*	750	0	900	6	* FL	240	1.5	.0 31.0
I. ART4EE	*	900	-6	1500	-6	* FL	1072	1.0	.0 31.0
J. ART4WE	*	900	6	1500	6	* FL	1098	1.0	.0 31.0
K. PIOANE	*	756	-750	756	-150	* FL	1384	1.0	.0 30.0
L. PIOASE	*	744	-750	744	-150	* FL	1181	1.0	.0 30.0
M. PIOBNA	*	756	-150	756	0	* FL	1221	1.8	.0 30.0
N. PIOBNL	*	756	-150	750	0	* FL	163	1.5	.0 30.0
O. PIOBSD	*	744	-150	744	0	* FL	1181	1.8	.0 30.0
P. PIOCND	*	756	0	756	150	* FL	1707	1.8	.0 30.0
Q. PIOCSEA	*	744	0	744	150	* FL	1070	1.8	.0 30.0
R. PIOCSEA	*	750	0	744	150	* FL	193	1.5	.0 30.0
S. PIODNE	*	756	150	756	750	* FL	1707	1.0	.0 30.0
T. PIODSE	*	744	150	744	750	* FL	1263	1.0	.0 30.0

Title : 2858
Version : CT-EMFAC 2.6
Run Date : 30 September 2011 07:38 PM
Scen Year : 2030
Season : Annual
Temperature : 68F
Relative Humidity: 55%
Area : South Coast Air Basin

=====
Running Exhaust Emissions (grams/mile)

Pollutant Name : CO

speed(mph)	Emission Factor
5	1.779000
10	1.506000
15	1.306000
20	1.164000
25	1.061000
30	0.977000
35	0.910000
40	0.857000
45	0.818000
50	0.794000
55	0.789000
60	0.809000
65	0.868000
70	1.017000
75	1.275000

Idling Emissions (grams/idle-hour) (Currently NOT Available)

Evaporative Running Loss Emissions (grams/minute)

END
